

For Research Use Only

MSI1 Recombinant monoclonal antibody

Catalog Number: 86723-1-RR



Basic Information

| | | |
|--|---|---|
| Catalog Number: 86723-1-RR | GenBank Accession Number: BC146463 | Purification Method: Protein A purification |
| Size: 100ul , Concentration: 1000 µg/ml by Nanodrop; | GeneID (NCBI): 4440 | CloneNo.: 251695G8 |
| Source: Rabbit | UNIPROT ID: O43347 | Recommended Dilutions: WB: 1:5000-1:50000 |
| Isotype: IgG | Full Name: musashi homolog 1 (Drosophila) | |
| Immunogen Catalog Number: AG26042 | Calculated MW: 362 aa, 39 kDa | |
| | Observed MW: 37-40 kDa | |

Applications

| | |
|--|--|
| Tested Applications: WB, ELISA | Positive Controls: WB : HEK-293T cells, mouse brain tissue, SH-SY5Y cells, COLO 320 cells, Neuro-2a cells, PC-12 cells, rat brain tissue |
| Species Specificity: human, mouse, rat | |

Background Information

Musashi1 (Msi1) is an RNA-binding protein expressed in neural progenitor cells and neural stem cells. The gene encoding human Msi1 encodes a 362 amino acid protein. In murine embryonic neural progenitor cells, Msi1 localizes to the cytoplasm and is downregulated during differentiation. Msi1 binds to NUMB, which encodes a membrane-associated antagonist of Notch signaling. Msi1 appears to function in the proliferation and maintenance of stem cell populations of the central nervous system. In addition to its usefulness as a marker for neural progenitor cells in normal human brains, Msi1 is also a marker for human gliomas. In rats, Msi1 is expressed in Sertoli cells of the testis and granulosa cells of the ovary.

Storage

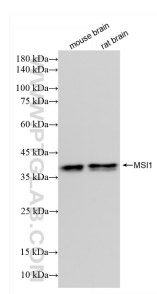
Storage:
Store at -20°C. Stable for one year after shipment.
Storage Buffer:
PBS with 0.02% sodium azide and 50% glycerol, pH7.3
Aliquoting is unnecessary for -20°C storage

*** 20ul sizes contain 0.1% BSA

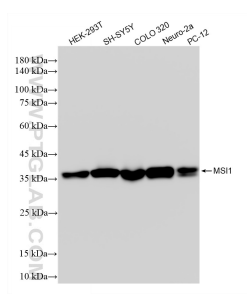
For technical support and original validation data for this product please contact:
T: 1 (888) 4PTGLAB (1-888-478-4522) (toll free in USA), or 1(312) 455-8498 (outside USA)
E: proteintech@ptglab.com
W: ptglab.com

This product is exclusively available under Proteintech Group brand and is not available to purchase from any other manufacturer.

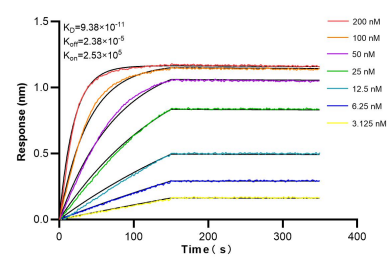
Selected Validation Data



Various lysates were subjected to SDS PAGE followed by western blot with 86723-1-RR (MSI1 antibody) at dilution of 1:10000 incubated at room temperature for 1.5 hours.



Various lysates were subjected to SDS PAGE followed by western blot with 86723-1-RR (MSI1 antibody) at dilution of 1:10000 incubated at room temperature for 1.5 hours.



Biolayer interferometry (BLI) kinetic assays of 86723-1-RR against Human MSI1 were performed. The affinity constant is 93.8 pM.