

For Research Use Only

# ZW10 Recombinant monoclonal antibody, PBS Only

Catalog Number: 86726-1-PBS

Featured Product



## Basic Information

<b>Catalog Number:</b> 86726-1-PBS	<b>GenBank Accession Number:</b> BC128264	<b>Purification Method:</b> Protein A purification
<b>Size:</b> 100ug, Concentration: 1 mg/ml by Nanodrop;	<b>GeneID (NCBI):</b> 9183	<b>CloneNo.:</b> 251397A5
<b>Source:</b> Rabbit	<b>UNIPROT ID:</b> O43264	
<b>Isotype:</b> IgG	<b>Full Name:</b> ZW10, kinetochore associated, homolog (Drosophila)	
<b>Immunogen Catalog Number:</b> AG19138	<b>Calculated MW:</b> 779 aa, 89 kDa	
	<b>Observed MW:</b> 88 kDa	

## Applications

**Tested Applications:**  
WB, IF/ICC, Indirect ELISA

**Species Specificity:**  
human

## Background Information

ZW10 is the human homolog of the *Drosophila melanogaster* Zw10 protein. ZW10 is localized to kinetochores and kinetochore-associated microtubules and is an essential component of the mitotic checkpoint, which prevents cells from prematurely exiting mitosis (PMID: 17102640). ZW10 proteins in *Drosophila* and HeLa cells display a similar and intriguing cell cycle-dependent intracellular distribution. ZW10 protein first becomes localized to the kinetochore at prometaphase, but then appears to move onto the kinetochore microtubules of the spindle at metaphase, and then back to the kinetochore at anaphase (PMID: 9700164).

## Storage

**Storage:**  
Store at -80°C.

**Storage Buffer:**  
PBS only, pH7.3

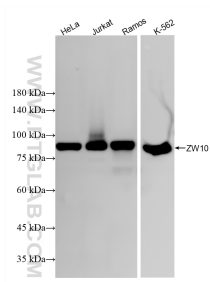
For technical support and original validation data for this product please contact:

T: 1 (888) 4PTGLAB (1-888-478-4522) (toll free in USA), or 1(312) 455-8498 (outside USA)

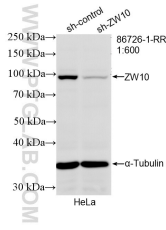
E: [proteintech@ptglab.com](mailto:proteintech@ptglab.com)  
W: [ptglab.com](http://ptglab.com)

This product is exclusively available under Proteintech Group brand and is not available to purchase from any other manufacturer.

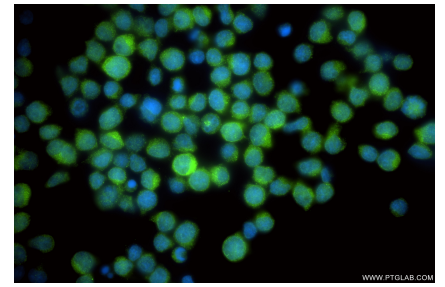
## Selected Validation Data



Various lysates were subjected to SDS PAGE followed by western blot with 86726-1-RR (ZW10 antibody) at dilution of 1:10000 incubated at room temperature for 1.5 hours. This data was developed using the same antibody clone with 86726-1-PBS in a different storage buffer formulation.



WB result of ZW10 antibody (86726-1-RR; 1:600; incubated at room temperature for 1.5 hours) with sh-Control and sh-ZW10 transfected HeLa cells. This data was developed using the same antibody clone with 86726-1-PBS in a different storage buffer formulation.



Immunofluorescent analysis of (4% PFA) fixed Jurkat cells using ZW10 antibody (86726-1-RR, Clone: 251397A5) at dilution of 1:400 and CoraLite@488-Conjugated Goat Anti-Rabbit IgG(H+L) (SA00013-2). This data was developed using the same antibody clone with 86726-1-PBS in a different storage buffer formulation.