

For Research Use Only

ZW10 Recombinant monoclonal antibody

Catalog Number: 86726-1-RR

Featured Product



Basic Information

Catalog Number:

86726-1-RR

Size:

100ul , Concentration: 1000 µg/ml by Nanodrop;

Source:

Rabbit

Isotype:

IgG

Immunogen Catalog Number:

AG19138

GenBank Accession Number:

BC128264

GeneID (NCBI):

9183

UNIPROT ID:

O43264

Full Name:

ZW10, kinetochore associated, homolog (Drosophila)

Calculated MW:

779 aa, 89 kDa

Observed MW:

88 kDa

Purification Method:

Protein A purification

CloneNo.:

251397A5

Recommended Dilutions:

WB: 1:5000-1:50000

IF/ICC: 1:200-1:800

Applications

Tested Applications:

WB, IF/ICC, ELISA

Species Specificity:

human

Positive Controls:

WB : HeLa cells, Jurkat cells, Ramos cells, K-562 cells

IF/ICC : Jurkat cells,

Background Information

ZW10 is the human homolog of the Drosophila melanogaster Zw10 protein. ZW10 is localized to kinetochores and kinetochore-associated microtubules and is an essential component of the mitotic checkpoint, which prevents cells from prematurely exiting mitosis (PMID: 17102640). ZW10 proteins in Drosophila and HeLa cells display a similar and intriguing cell cycle-dependent intracellular distribution. ZW10 protein first becomes localized to the kinetochore at prometaphase, but then appears to move onto the kinetochore microtubules of the spindle at metaphase, and then back to the kinetochore at anaphase (PMID: 9700164).

Storage

Storage:

Store at -20°C. Stable for one year after shipment.

Storage Buffer:

PBS with 0.02% sodium azide and 50% glycerol, pH7.3

Aliquoting is unnecessary for -20°C storage

*** 20ul sizes contain 0.1% BSA

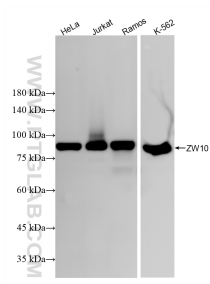
For technical support and original validation data for this product please contact:

T: 1 (888) 4PTGLAB (1-888-478-4522) (toll free in USA), or 1(312) 455-8498 (outside USA)

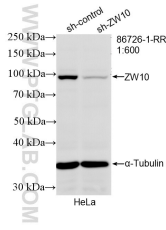
E: proteintech@ptglab.com
W: ptglab.com

This product is exclusively available under Proteintech Group brand and is not available to purchase from any other manufacturer.

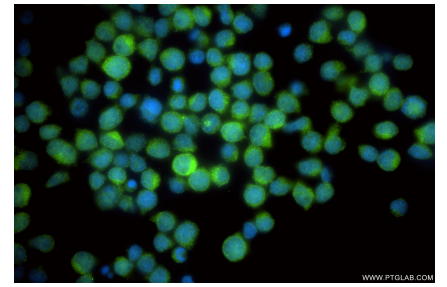
Selected Validation Data



Various lysates were subjected to SDS PAGE followed by western blot with 86726-1-RR (ZW10 antibody) at dilution of 1:10000 incubated at room temperature for 1.5 hours.



WB result of ZW10 antibody (86726-1-RR; 1:600; incubated at room temperature for 1.5 hours) with sh-Control and sh-ZW10 transfected HeLa cells.



Immunofluorescent analysis of (4% PFA) fixed Jurkat cells using ZW10 antibody (86726-1-RR, Clone: 251397A5) at dilution of 1:400 and CoraLite® 488-Conjugated Goat Anti-Rabbit IgG(H+L) (SA00013-2).