

For Research Use Only

# NCF1 Recombinant monoclonal antibody, PBS Only (Detector)

Catalog Number: 86733-1-PBS



## Basic Information

<b>Catalog Number:</b> 86733-1-PBS	<b>GenBank Accession Number:</b> BC002816	<b>Purification Method:</b> Protein A purification
<b>Size:</b> 100ug , Concentration: 1 mg/ml by Nanodrop;	<b>GeneID (NCBI):</b> 653361	<b>CloneNo.:</b> 251451A12
<b>Source:</b> Rabbit	<b>UNIPROT ID:</b> P14598	
<b>Isotype:</b> IgG	<b>Full Name:</b> neutrophil cytosolic factor 1	
<b>Immunogen Catalog Number:</b> AG28089	<b>Calculated MW:</b> 45 kDa	

## Applications

**Tested Applications:**  
Cytometric bead array, Indirect ELISA

**Species Specificity:**  
human

## Product Information

86733-1-PBS targets NCF1 as part of a matched antibody pair:

MP02620-1: 86733-2-PBS capture and 86733-1-PBS detection (validated in Cytometric bead array)

Unconjugated rabbit recombinant monoclonal antibody in PBS only (BSA and azide free) storage buffer at a concentration of 1 mg/mL, ready for conjugation. Created using Proteintech's proprietary in-house recombinant technology. Recombinant production enables unrivalled batch-to-batch consistency, easy scale-up, and future security of supply.

This conjugation ready format makes antibodies ideal for use in many applications including: ELISAs, multiplex assays requiring matched pairs, mass cytometry, and multiplex imaging applications. Antibody use should be optimized by the end user for each application and assay.

## Storage

**Storage:**  
Store at -80°C.

**Storage Buffer:**  
PBS only, pH7.3

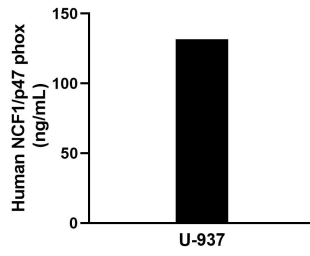
For technical support and original validation data for this product please contact:

T: 1 (888) 4PTGLAB (1-888-478-4522) (toll free in USA), or 1(312) 455-8498 (outside USA)

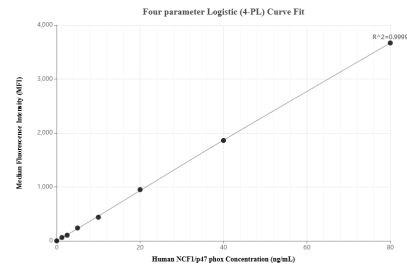
E: [proteintech@ptglab.com](mailto:proteintech@ptglab.com)  
W: [ptglab.com](http://ptglab.com)

**This product is exclusively available under Proteintech Group brand and is not available to purchase from any other manufacturer.**

## Selected Validation Data



The mean NCF1/p47 phox concentration was determined to be 133.2 ng/mL in U-937 cell extract based on a 2.6 mg/mL extract load.



Cytometric bead array standard curve of MP02620-1, NCF1/p47 phox Recombinant Matched Antibody Pair, PBS Only. Capture antibody: 86733-2-PBS. Detection antibody: 86733-1-PBS. Standard: Ag28089. Range: 1.25-80 ng/mL.