

For Research Use Only

# CCL15 Recombinant monoclonal antibody, PBS Only (Detector)

Catalog Number:86738-1-PBS



## Basic Information

<b>Catalog Number:</b> 86738-1-PBS	<b>GenBank Accession Number:</b> NM_032965.5	<b>Purification Method:</b> Protein A purification
<b>Size:</b> 100ug , Concentration: 1 mg/ml by Nanodrop;	<b>GeneID (NCBI):</b> 6359	<b>CloneNo.:</b> 250603E3
<b>Source:</b> Rabbit	<b>UNIPROT ID:</b> Q16663	
<b>Isotype:</b> IgG	<b>Full Name:</b> chemokine (C-C motif) ligand 15	
<b>Immunogen Catalog Number:</b> EG2877	<b>Calculated MW:</b> 12 kDa	

## Applications

**Tested Applications:**  
Cytometric bead array, Sandwich ELISA, Indirect ELISA

**Species Specificity:**  
human

## Product Information

86738-1-PBS targets CCL15 as part of a matched antibody pair.

MP02618-1: 86738-2-PBS capture and 86738-1-PBS detection (validated in Cytometric bead array, Sandwich ELISA)

Unconjugated rabbit recombinant monoclonal antibody in PBS only (BSA and azide free) storage buffer at a concentration of 1 mg/mL, ready for conjugation. Created using Proteintech's proprietary in-house recombinant technology. Recombinant production enables unrivalled batch-to-batch consistency, easy scale-up, and future security of supply.

This conjugation ready format makes antibodies ideal for use in many applications including: ELISAs, multiplex assays requiring matched pairs, mass cytometry, and multiplex imaging applications. Antibody use should be optimized by the end user for each application and assay.

## Storage

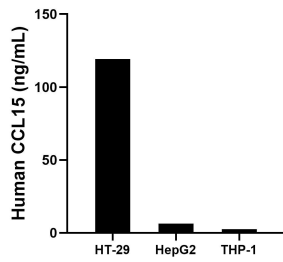
**Storage:**  
Store at -80°C.

**Storage Buffer:**  
PBS only, pH7.3

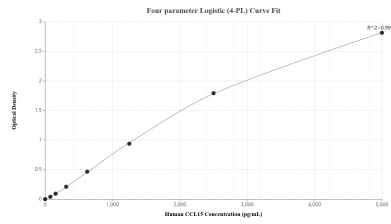
For technical support and original validation data for this product please contact:  
T: 1 (888) 4PTGLAB (1-888-478-4522) (toll free in USA), or 1(312) 455-8498 (outside USA)      E: proteintech@ptglab.com  
W: ptglab.com

**This product is exclusively available under Proteintech Group brand and is not available to purchase from any other manufacturer.**

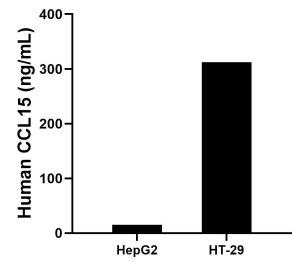
## Selected Validation Data



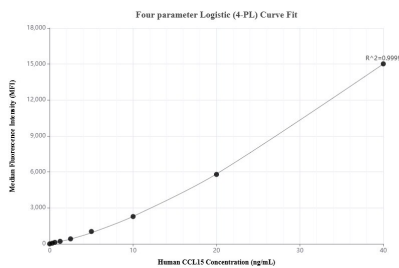
The mean CCL15 concentration was determined to be 119.3 ng/mL in HT-29 cell extract based on a 1.1 mg/mL extract load, 6.4 ng/mL in HepG2 cell extract based on a 1.2 mg/mL extract load and 2.5 ng/mL in THP-1 cell extract based on a 1.2 mg/mL extract load.



Sandwich ELISA standard curve of MP02618-1, Human CCL15 Recombinant Matched Antibody Pair - PBS only. 86738-2-PBS was coated to a plate as the capture antibody and incubated with serial dilutions of standard Eg2877. 86738-1-PBS was HRP conjugated as the detection antibody. Range: 78.1-5000 pg/mL.



The mean CCL15 concentration was determined to be 15.0 ng/mL in HepG2 cell extract based on a 1.2 mg/mL extract load, 312.2 ng/mL in HT-29 cell extract based on a 1.5 mg/mL extract load.



Cytometric bead array standard curve of MP02618-1, CCL15 Recombinant Matched Antibody Pair, PBS Only. Capture antibody: 86738-2-PBS. Detection antibody: 86738-1-PBS. Standard: Eg2877. Range: 0.312-40 ng/mL.