

For Research Use Only

CCL15 Recombinant monoclonal antibody, PBS Only (Capture)

Catalog Number:86738-2-PBS



Basic Information

Catalog Number: 86738-2-PBS	GenBank Accession Number: NM_032965.5	Purification Method: Protein A purification
Size: 100ug , Concentration: 1 mg/ml by Nanodrop;	GeneID (NCBI): 6359	CloneNo.: 250603H5
Source: Rabbit	UNIPROT ID: Q16663	
Isotype: IgG	Full Name: chemokine (C-C motif) ligand 15	
Immunogen Catalog Number: EG2877	Calculated MW: 12 kDa	

Applications

Tested Applications:
Cytometric bead array, Sandwich ELISA, Indirect ELISA

Species Specificity:
human

Product Information

86738-2-PBS targets CCL15 as part of a matched antibody pair.

MP02618-1: 86738-2-PBS capture and 86738-1-PBS detection (validated in Cytometric bead array, Sandwich ELISA)

Unconjugated rabbit recombinant monoclonal antibody in PBS only (BSA and azide free) storage buffer at a concentration of 1 mg/mL, ready for conjugation. Created using Proteintech's proprietary in-house recombinant technology. Recombinant production enables unrivalled batch-to-batch consistency, easy scale-up, and future security of supply.

This conjugation ready format makes antibodies ideal for use in many applications including: ELISAs, multiplex assays requiring matched pairs, mass cytometry, and multiplex imaging applications. Antibody use should be optimized by the end user for each application and assay.

Storage

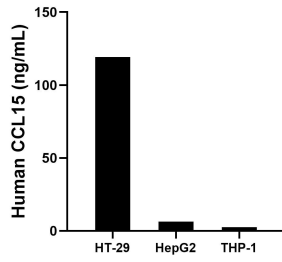
Storage:
Store at -80°C.

Storage Buffer:
PBS only, pH7.3

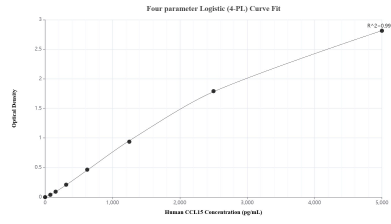
For technical support and original validation data for this product please contact:
T: 1 (888) 4PTGLAB (1-888-478-4522) (toll free in USA), or 1(312) 455-8498 (outside USA) E: proteintech@ptglab.com W: ptglab.com

This product is exclusively available under Proteintech Group brand and is not available to purchase from any other manufacturer.

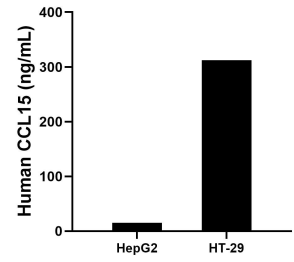
Selected Validation Data



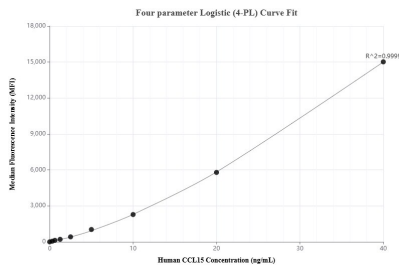
The mean CCL15 concentration was determined to be 119.3 ng/mL in HT-29 cell extract based on a 1.1 mg/mL extract load, 6.4 ng/mL in HepG2 cell extract based on a 1.2 mg/mL extract load and 2.5 ng/mL in THP-1 cell extract based on a 1.2 mg/mL extract load.



Sandwich ELISA standard curve of MP02618-1, Human CCL15 Recombinant Matched Antibody Pair - PBS only. 86738-2-PBS was coated to a plate as the capture antibody and incubated with serial dilutions of standard Eg2877. 86738-1-PBS was HRP conjugated as the detection antibody. Range: 78.1-5000 pg/mL.



The mean CCL15 concentration was determined to be 15.0 ng/mL in HepG2 cell extract based on a 1.2 mg/mL extract load, 312.2 ng/mL in HT-29 cell extract based on a 1.5 mg/mL extract load.



Cytometric bead array standard curve of MP02618-1, CCL15 Recombinant Matched Antibody Pair, PBS Only. Capture antibody: 86738-2-PBS. Detection antibody: 86738-1-PBS. Standard: Eg2877. Range: 0.312-40 ng/mL.