

For Research Use Only

PDE4D Recombinant monoclonal antibody, PBS Only

Catalog Number: 86745-1-PBS



Basic Information

Catalog Number:

86745-1-PBS

Size:

100ug, Concentration: 1 mg/ml by Nanodrop;

Source:

Rabbit

Isotype:

IgG

Immunogen Catalog Number:

AG3588

GenBank Accession Number:

BC036319

GeneID (NCBI):

5144

UNIPROT ID:

Q08499

Full Name:

phosphodiesterase 4D, cAMP-specific (phosphodiesterase E3 dunce homolog, Drosophila)

Calculated MW:

809 aa, 91 kDa

Observed MW:

91 kDa

Purification Method:

Protein A purification

CloneNo.:

251427D3

Applications

Tested Applications:

WB, Indirect ELISA

Species Specificity:

human, mouse, rat

Background Information

PDE4D (cAMP-specific 3',5'-cyclic phosphodiesterase 4D) is also named as DPDE3, PDE43, and belongs to the cyclic nucleotide phosphodiesterase family and PDE4 subfamily. PDE4D subtype may be of particular importance as an antidepressant target in that it is regulated by repeated treatment with both norepinephrine and serotonin reuptake inhibitors as well as by the PDE4 inhibitor rolipram (PMID:16730340). It has some isoforms, and all the PDE4D isoforms are expressed in healthy adult human hippocampus and in hippocampus from a patient with advanced Alzheimer's disease (PMID:17353396).

Storage

Storage:

Store at -80°C.

Storage Buffer:

PBS only, pH7.3

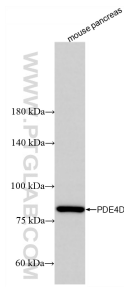
For technical support and original validation data for this product please contact:

T: 1 (888) 4PTGLAB (1-888-478-4522) (toll free in USA), or 1(312) 455-8498 (outside USA)

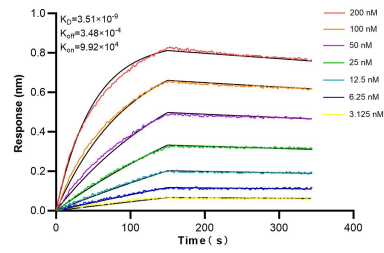
E: proteintech@ptglab.com
W: ptglab.com

This product is exclusively available under Proteintech Group brand and is not available to purchase from any other manufacturer.

Selected Validation Data



Mouse pancreas tissue were subjected to SDS PAGE followed by western blot with 86745-1-RR (PDE4D antibody) at dilution of 1:10000 incubated at room temperature for 1.5 hours. This data was developed using the same antibody clone with 86745-1-PBS in a different storage buffer formulation.



Biolayer interferometry (BLI) kinetic assays of 86745-1-RR against Human PDE4D were performed. The affinity constant is 3.51 nM.