

For Research Use Only

PDE4D Recombinant monoclonal antibody

Catalog Number: 86745-1-RR



Basic Information

Catalog Number: 86745-1-RR	GenBank Accession Number: BC036319	Purification Method: Protein A purification
Size: 100ul , Concentration: 1000 µg/ml by Nanodrop;	GeneID (NCBI): 5144	CloneNo.: 251427D3
Source: Rabbit	UNIPROT ID: Q08499	Recommended Dilutions: WB: 1:5000-1:50000
Isotype: IgG	Full Name: phosphodiesterase 4D, cAMP-specific (phosphodiesterase E3 dunce homolog, Drosophila)	
Immunogen Catalog Number: AG3588	Calculated MW: 809 aa, 91 kDa	
	Observed MW: 91 kDa	

Applications

Tested Applications: WB, ELISA	Positive Controls: WB : mouse pancreas tissue, K-562 cells, rat brain tissue
Species Specificity: human, mouse, rat	

Background Information

PDE4D (cAMP-specific 3',5'-cyclic phosphodiesterase 4D) is also named as DPDE3, PDE43, and belongs to the cyclic nucleotide phosphodiesterase family and PDE4 subfamily. PDE4D subtype may be of particular importance as an antidepressant target in that it is regulated by repeated treatment with both norepinephrine and serotonin reuptake inhibitors as well as by the PDE4 inhibitor rolipram (PMID:16730340). It has some isoforms, and all the PDE4D isoforms are expressed in healthy adult human hippocampus and in hippocampus from a patient with advanced Alzheimer's disease (PMID:17353396).

Storage

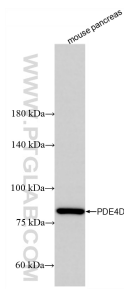
Storage:
Store at -20°C. Stable for one year after shipment.
Storage Buffer:
PBS with 0.02% sodium azide and 50% glycerol, pH7.3
Aliquoting is unnecessary for -20°C storage

*** 20ul sizes contain 0.1% BSA

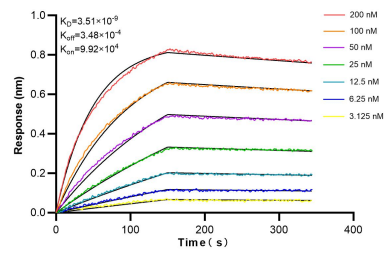
For technical support and original validation data for this product please contact:
T: 1 (888) 4PTGLAB (1-888-478-4522) (toll free in USA), or 1(312) 455-8498 (outside USA)
E: proteintech@ptglab.com
W: ptglab.com

This product is exclusively available under Proteintech Group brand and is not available to purchase from any other manufacturer.

Selected Validation Data



Mouse pancreas tissue was subjected to SDS PAGE followed by western blot with 86745-1-RR (PDE4D antibody) at dilution of 1:10000 incubated at room temperature for 1.5 hours.



Biolayer interferometry (BLI) kinetic assays of 86745-1-RR against Human PDE4D were performed. The affinity constant is 3.51 nM.