

For Research Use Only

# GUF1 Recombinant monoclonal antibody, PBS Only

Catalog Number: 86747-1-PBS



## Basic Information

<b>Catalog Number:</b> 86747-1-PBS	<b>GenBank Accession Number:</b> BC036768	<b>Purification Method:</b> Protein A purification
<b>Size:</b> 100ug, Concentration: 1 mg/ml by Nanodrop;	<b>GeneID (NCBI):</b> 60558	<b>CloneNo.:</b> 251449D6
<b>Source:</b> Rabbit	<b>UNIPROT ID:</b> Q8N442	
<b>Isotype:</b> IgG	<b>Full Name:</b> GUF1 GTPase homolog (S. cerevisiae)	
<b>Immunogen Catalog Number:</b> AG11579	<b>Calculated MW:</b> 669 aa, 74 kDa	
	<b>Observed MW:</b> 68-70 kDa	

## Applications

**Tested Applications:**  
WB, IP, Indirect ELISA

**Species Specificity:**  
human, mouse, rat

## Background Information

GUF1 (GUF1 GTPase), also known as EF-4 (elongation factor 4 homolog), is a 669 amino acid protein belonging to the GTP-binding elongation factor family and the LepA subfamily. Localizing to the mitochondrion inner membrane, GUF1 promotes mitochondrial protein synthesis and binds to mitochondrial ribosomes in a GTP-dependent manner. GUF1 may act as a fidelity factor of the translation reaction, by catalyzing a one-codon backward translocation of tRNAs on improperly translocated ribosomes.

## Storage

**Storage:**  
Store at -80°C.

**Storage Buffer:**  
PBS only, pH7.3

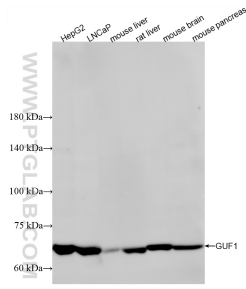
For technical support and original validation data for this product please contact:

T: 1 (888) 4PTGLAB (1-888-478-4522) (toll free in USA), or 1(312) 455-8498 (outside USA)

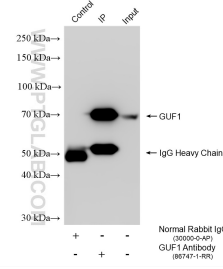
E: [proteintech@ptglab.com](mailto:proteintech@ptglab.com)  
W: [ptglab.com](http://ptglab.com)

**This product is exclusively available under Proteintech Group brand and is not available to purchase from any other manufacturer.**

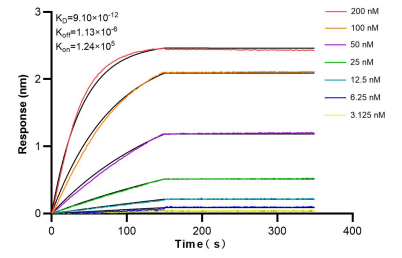
## Selected Validation Data



Various lysates were subjected to SDS PAGE followed by western blot with 86747-1-RR (GUF1 antibody) at dilution of 1:10000 incubated at room temperature for 1.5 hours. This data was developed using the same antibody clone with 86747-1-PBS in a different storage buffer formulation.



IP result of anti-GUF1 (IP:86747-1-RR, 4 $\mu$ g; Detection:86747-1-RR 1:2000) with HepG2 cells lysate 2000  $\mu$ g. This data was developed using the same antibody clone with 86747-1-PBS in a different storage buffer formulation.



Bi-layer interferometry (BLI) kinetic assays of 86747-1-RR against Human GUF1 were performed. The affinity constant is 9.10 pM.