

For Research Use Only

GUF1 Recombinant monoclonal antibody

Catalog Number: 86747-1-RR



Basic Information

Catalog Number: 86747-1-RR	GenBank Accession Number: BC036768	Purification Method: Protein A purification
Size: 100ul , Concentration: 1000 µg/ml by Nanodrop;	GeneID (NCBI): 60558	CloneNo.: 251449D6
Source: Rabbit	UNIPROT ID: Q8N442	Recommended Dilutions: WB: 1:5000-1:50000 IP: 0.5-4.0 ug for 1.0-3.0 mg of total protein lysate
Isotype: IgG	Full Name: GUF1 GTPase homolog (S. cerevisiae)	
Immunogen Catalog Number: AG11579	Calculated MW: 669 aa, 74 kDa	
	Observed MW: 68-70 kDa	

Applications

Tested Applications:
WB, IP, ELISA

Species Specificity:
human, mouse, rat

Positive Controls:

WB : HepG2 cells, LNCaP cells, mouse liver tissue, rat liver tissue, mouse brain tissue, mouse pancreas tissue

IP : HepG2 cells,

Background Information

GUF1 (GUF1 GTPase), also known as EF-4 (elongation factor 4 homolog), is a 669 amino acid protein belonging to the GTP-binding elongation factor family and the LepA subfamily. Localizing to the mitochondrion inner membrane, GUF1 promotes mitochondrial protein synthesis and binds to mitochondrial ribosomes in a GTP-dependent manner. GUF1 may act as a fidelity factor of the translation reaction, by catalyzing a one-codon backward translocation of tRNAs on improperly translocated ribosomes.

Storage

Storage:

Store at -20°C. Stable for one year after shipment.

Storage Buffer:

PBS with 0.02% sodium azide and 50% glycerol, pH7.3

Aliquoting is unnecessary for -20°C storage

*** 20ul sizes contain 0.1% BSA

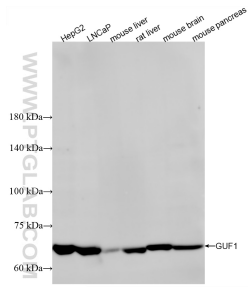
For technical support and original validation data for this product please contact:

T: 1 (888) 4PTGLAB (1-888-478-4522) (toll free in USA), or 1(312) 455-8498 (outside USA)

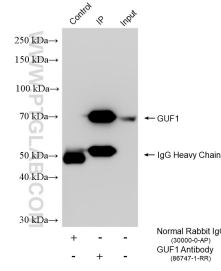
E: proteintech@ptglab.com
W: ptglab.com

This product is exclusively available under Proteintech Group brand and is not available to purchase from any other manufacturer.

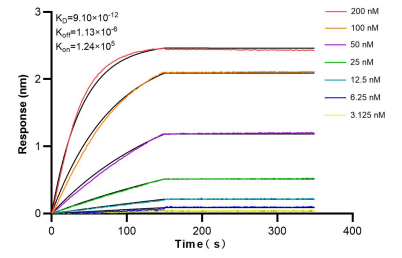
Selected Validation Data



Various lysates were subjected to SDS PAGE followed by western blot with 86747-1-RR (GUF1 antibody) at dilution of 1:10000 incubated at room temperature for 1.5 hours.



IP result of anti-GUF1 (IP:86747-1-RR, 4 μ g; Detection:86747-1-RR 1:2000) with HepG2 cells lysate 2000 μ g.



Biacore BLI kinetic assays of 86747-1-RR against Human GUF1 were performed. The affinity constant is 9.10 pM.