

For Research Use Only

# Phospho-TAU (Ser202) Recombinant monoclonal antibody, PBS Only

Catalog Number: 86748-1-PBS



## Basic Information

<b>Catalog Number:</b> 86748-1-PBS	<b>GenBank Accession Number:</b> BC000558	<b>Purification Method:</b> Protein A purification
<b>Size:</b> 100ug, Concentration: 1 mg/ml by Nanodrop;	<b>GeneID (NCBI):</b> 4137	<b>CloneNo.:</b> 251172C7
<b>Source:</b> Rabbit	<b>UNIPROT ID:</b> P10636	
<b>Isotype:</b> IgG	<b>Full Name:</b> microtubule-associated protein tau	
	<b>Calculated MW:</b> 37-46, 79-81 kDa	
	<b>Observed MW:</b> 45-60 kDa	

## Applications

**Tested Applications:**  
WB, IF-P, Indirect ELISA

**Species Specificity:**  
human, mouse

## Background Information

Tau is hyperphosphorylated during aging and in age-related neurodegenerative diseases such as Alzheimer's disease (AD) and fronto-temporal dementia. Hyperphosphorylation of Tau leads to the formation of neurofibrillary tangles (NFT) in the neurons and glia cells, which is one of the hallmarks of AD.

## Storage

**Storage:**  
Store at -80°C.

**Storage Buffer:**  
PBS only, pH7.3

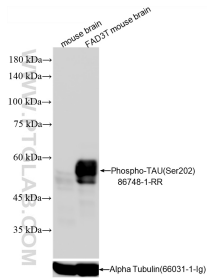
For technical support and original validation data for this product please contact:

T: 1 (888) 4PTGLAB (1-888-478-4522) (toll free in USA), or 1(312) 455-8498 (outside USA)

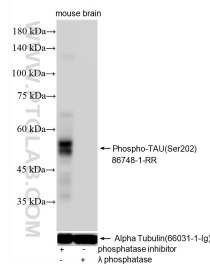
E: [proteintech@ptglab.com](mailto:proteintech@ptglab.com)  
W: [ptglab.com](http://ptglab.com)

**This product is exclusively available under Proteintech Group brand and is not available to purchase from any other manufacturer.**

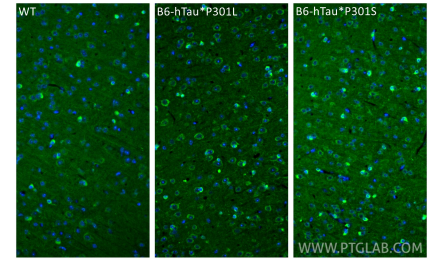
## Selected Validation Data



Various lysates were subjected to SDS PAGE followed by western blot with 86748-1-RR (Phospho-TAU (Ser202) antibody) at dilution of 1:5000 incubated at room temperature for 1.5 hours. The membrane was stripped and re-blotted with Alpha Tubulin antibody as loading control. The FAD3T mouse is a triple transgenic model expressing APP, PS1, and Tau transgenes. This data was developed using the same antibody clone with 86748-1-PBS in a different storage buffer formulation.



Phosphatase inhibitor treated and  $\lambda$  phosphatase treated mouse brain tissue were subjected to SDS PAGE followed by western blot with 86748-1-RR (Phospho-TAU (Ser202) antibody) at dilution of 1:5000 incubated at room temperature for 1 hours. The membrane was stripped and re-blotted with Alpha Tubulin antibody as loading control. This data was developed using the same antibody clone with 86748-1-PBS in a different storage buffer formulation.



Immunofluorescent analysis of (4% PFA) fixed paraffin-embedded mouse brain tissue using Phospho-TAU (Ser202) antibody (86748-1-RR, Clone: 251172C7) at dilution of 1:500 and CoraLite®488-Conjugated Goat Anti-Rabbit IgG(H+L) (SA00013-2). Heat mediated antigen retrieval with Tris-EDTA buffer (pH 9.0). This data was developed using the same antibody clone with 86748-1-PBS in a different storage buffer formulation.