

For Research Use Only

Phospho-TAU (Ser202) Recombinant monoclonal antibody

Catalog Number: 86748-1-RR



Basic Information

Catalog Number: 86748-1-RR	GenBank Accession Number: BC000558	Purification Method: Protein A purification
Size: 100ul , Concentration: 1000 µg/ml by Nanodrop;	GeneID (NCBI): 4137	CloneNo.: 251172C7
Source: Rabbit	UNIPROT ID: P10636	Recommended Dilutions: WB: 1:2000-1:10000 IF-P: 1:250-1:1000
Isotype: IgG	Full Name: microtubule-associated protein tau	
	Calculated MW: 37-46, 79-81 kDa	
	Observed MW: 45-60 kDa	

Applications

Tested Applications:
WB, IF-P, ELISA

Species Specificity:
human, mouse

Positive Controls:

WB : FAD3T mouse brain tissue, mouse brain tissue, λ phosphatase treated mouse brain tissue

IF-P : mouse brain tissue,

Background Information

Tau is hyperphosphorylated during aging and in age-related neurodegenerative diseases such as Alzheimer's disease (AD) and fronto-temporal dementia. Hyperphosphorylation of Tau leads to the formation of neurofibrillary tangles (NFT) in the neurons and glia cells, which is one of the hallmarks of AD.

Storage

Storage:
Store at -20°C. Stable for one year after shipment.

Storage Buffer:
PBS with 0.02% sodium azide and 50% glycerol, pH7.3

Aliquoting is unnecessary for -20°C storage

*** 20ul sizes contain 0.1% BSA

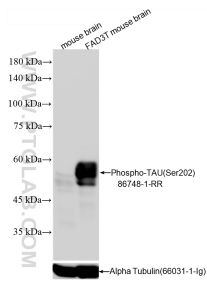
For technical support and original validation data for this product please contact:

T: 1 (888) 4PTGLAB (1-888-478-4522) (toll free in USA), or 1(312) 455-8498 (outside USA)

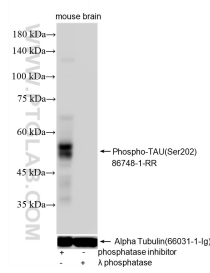
E: proteintech@ptglab.com
W: ptglab.com

This product is exclusively available under Proteintech Group brand and is not available to purchase from any other manufacturer.

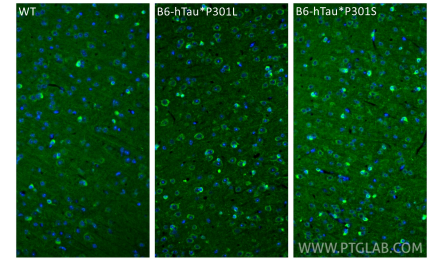
Selected Validation Data



Various lysates were subjected to SDS PAGE followed by western blot with 86748-1-RR (Phospho-TAU (Ser202) antibody) at dilution of 1:5000 incubated at room temperature for 1.5 hours. The membrane was stripped and re-blotted with Alpha Tubulin antibody as loading control. The FAD3T mouse is a triple transgenic model expressing APP, PS1, and Tau transgenes.



Phosphatase inhibitor treated and λ phosphatase treated mouse brain tissue were subjected to SDS PAGE followed by western blot with 86748-1-RR (Phospho-TAU (Ser202) antibody) at dilution of 1:5000 incubated at room temperature for 1 hours. The membrane was stripped and re-blotted with Alpha Tubulin antibody as loading control.



Immunofluorescent analysis of (4% PFA) fixed paraffin-embedded mouse brain tissue using Phospho-TAU (Ser202) antibody (86748-1-RR, Clone: 251172C7) at dilution of 1:500 and CoraLite®488-Conjugated Goat Anti-Rabbit IgG(H+L) (SA00013-2). Heat mediated antigen retrieval with Tris-EDTA buffer (pH 9.0).