

For Research Use Only

CCL13 Recombinant antibody, PBS Only (Detector)

Catalog Number: 86751-1-PBS



Basic Information

Catalog Number: 86751-1-PBS	GenBank Accession Number: NM_005408.3	Purification Method: Protein A purification
Size: 100ug , Concentration: 1 mg/ml by Nanodrop;	GeneID (NCBI): 6357	CloneNo.: 250378D6
Source: Rabbit	UNIPROT ID: Q99616	
Isotype: IgG	Full Name: chemokine (C-C motif) ligand 13	
Immunogen Catalog Number: EG2818	Calculated MW: 11 kDa	

Applications

Tested Applications:
Sandwich ELISA, Indirect ELISA, Sample test

Species Specificity:
human

Product Information

86751-1-PBS targets CCL13 as part of a matched antibody pair.

MP02606-1: 86751-2-PBS capture and 86751-1-PBS detection (validated in Sandwich ELISA)

Unconjugated rabbit recombinant monoclonal antibody in PBS only (BSA and azide free) storage buffer at a concentration of 1 mg/mL, ready for conjugation. Created using Proteintech's proprietary in-house recombinant technology. Recombinant production enables unrivalled batch-to-batch consistency, easy scale-up, and future security of supply.

This conjugation ready format makes antibodies ideal for use in many applications including: ELISAs, multiplex assays requiring matched pairs, mass cytometry, and multiplex imaging applications. Antibody use should be optimized by the end user for each application and assay.

Storage

Storage:
Store at -80°C.

Storage Buffer:
PBS only, pH7.3

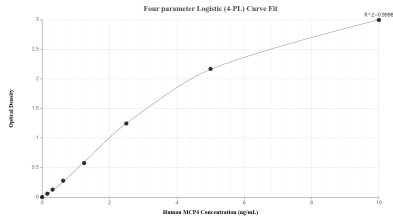
For technical support and original validation data for this product please contact:

T: 1 (888) 4PTGLAB (1-888-478-4522) (toll free
in USA), or 1(312) 455-8498 (outside USA)

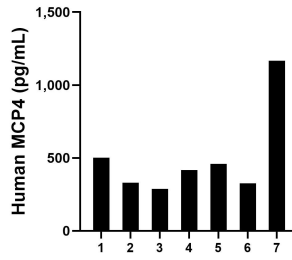
E: proteintech@ptglab.com
W: ptglab.com

This product is exclusively available under Proteintech Group brand and is not available to purchase from any other manufacturer.

Selected Validation Data



Sandwich ELISA standard curve of MP02606-1, Human MCP4 Recombinant Matched Antibody Pair - PBS only. 86751-2-PBS was coated to a plate as the capture antibody and incubated with serial dilutions of standard Eg2818. 86751-1-PBS was HRP conjugated as the detection antibody. Range: 0.156-10 ng/mL.



Plasma of seven individual healthy human donors was measured. The MCP4 concentration of detected samples was determined to be 498.83 pg/mL with a range of 288.98-1,167.06 pg/mL.