

For Research Use Only

ALPP Recombinant antibody, PBS Only (Capture)

Catalog Number: 86752-2-PBS



Basic Information

Catalog Number: 86752-2-PBS	GenBank Accession Number: NM_001632.4	Purification Method: Protein A purification
Size: 100ug , Concentration: 1 mg/ml by Nanodrop;	GeneID (NCBI): 250	CloneNo.: 251261C4
Source: Rabbit	UNIPROT ID: P05187	
Isotype: IgG	Full Name: alkaline phosphatase, placental (Regan isozyme)	
Immunogen Catalog Number: EG3065	Calculated MW: 58 kDa	

Applications

Tested Applications:
Sandwich ELISA, Indirect ELISA, Sample test

Species Specificity:
human

Product Information

86752-2-PBS targets ALPP as part of a matched antibody pair:

MP02613-1: 86752-2-PBS capture and 86752-1-PBS detection (validated in Sandwich ELISA)

Unconjugated rabbit recombinant monoclonal antibody in PBS only (BSA and azide free) storage buffer at a concentration of 1 mg/mL, ready for conjugation. Created using Proteintech's proprietary in-house recombinant technology. Recombinant production enables unrivalled batch-to-batch consistency, easy scale-up, and future security of supply.

This conjugation ready format makes antibodies ideal for use in many applications including: ELISAs, multiplex assays requiring matched pairs, mass cytometry, and multiplex imaging applications. Antibody use should be optimized by the end user for each application and assay.

Storage

Storage:
Store at -80°C.

Storage Buffer:
PBS only, pH7.3

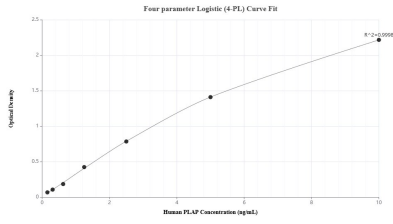
For technical support and original validation data for this product please contact:

T: 1 (888) 4PTGLAB (1-888-478-4522) (toll free in USA), or 1(312) 455-8498 (outside USA)

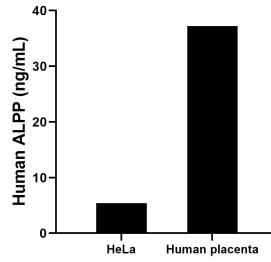
E: proteintech@ptglab.com
W: ptglab.com

This product is exclusively available under Proteintech Group brand and is not available to purchase from any other manufacturer.

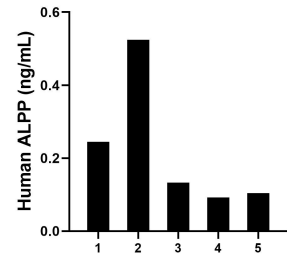
Selected Validation Data



Sandwich ELISA standard curve of MP02613-1, Human PLAP Recombinant Matched Antibody Pair - PBS only. 86752-2-PBS was coated to a plate as the capture antibody and incubated with serial dilutions of standard Eg3065. 86752-1-PBS was HRP conjugated as the detection antibody. Range: 0.156-10 ng/mL



The mean PLAP concentration was determined to be 5.44 ng/mL in HeLa cell extract based on a 1.2 mg/mL extract load and 37.23 ng/mL in human placenta tissue extract based on a 3.8 mg/mL extract load.



Plasma of five individual healthy human donors was measured. The human PLAP concentration of detected samples was determined to be 0.22 ng/mL with a range of 0.09 - 0.52 ng/mL.