

For Research Use Only

RETN Recombinant monoclonal antibody, PBS Only (Capture)

Catalog Number: 86757-2-PBS



Basic Information

| | | |
|---|--|---|
| Catalog Number: 86757-2-PBS | GenBank Accession Number: BC101560 | Purification Method: Protein A purification |
| Size: 100ug , Concentration: 1 mg/ml by Nanodrop; | GeneID (NCBI): 56729 | CloneNo.: 251589H6 |
| Source: Rabbit | UNIPROT ID: Q9HD89 | |
| Isotype: IgG | Full Name: resistin | |
| Immunogen Catalog Number: EG5393 | Calculated MW: 108 aa, 11 kDa | |

Applications

Tested Applications:
Cytometric bead array, Sandwich ELISA, Indirect ELISA

Species Specificity:
human

Product Information

86757-2-PBS targets RETN as part of a matched antibody pair:

MP02651-1: 86757-2-PBS capture and 86757-1-PBS detection (validated in Cytometric bead array)

MP02651-2: 86757-2-PBS capture and 86757-3-PBS detection (validated in Sandwich ELISA)

Unconjugated rabbit recombinant monoclonal antibody in PBS only (BSA and azide free) storage buffer at a concentration of 1 mg/mL, ready for conjugation. Created using Proteintech's proprietary in-house recombinant technology. Recombinant production enables unrivalled batch-to-batch consistency, easy scale-up, and future security of supply.

This conjugation ready format makes antibodies ideal for use in many applications including: ELISAs, multiplex assays requiring matched pairs, mass cytometry, and multiplex imaging applications. Antibody use should be optimized by the end user for each application and assay.

Storage

Storage:
Store at -80°C.
Storage Buffer:
PBS only, pH7.3

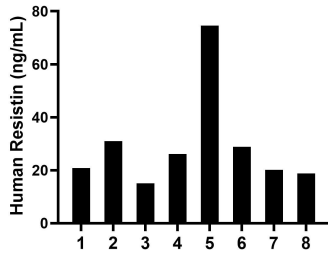
For technical support and original validation data for this product please contact:

T: 1 (888) 4PTGLAB (1-888-478-4522) (toll free in USA), or 1(312) 455-8498 (outside USA)

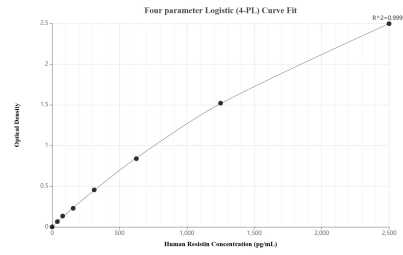
E: proteintech@ptglab.com
W: ptglab.com

This product is exclusively available under Proteintech Group brand and is not available to purchase from any other manufacturer.

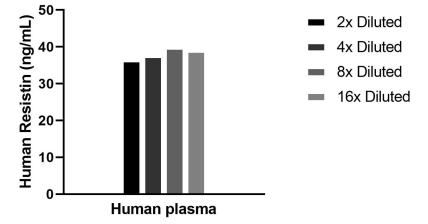
Selected Validation Data



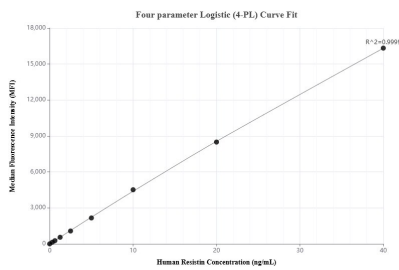
Plasma of eight individual healthy human donors was measured. The Resistin concentration of detected samples was determined to be 32.8 ng/mL with a range of 15.1-74.6 ng/mL.



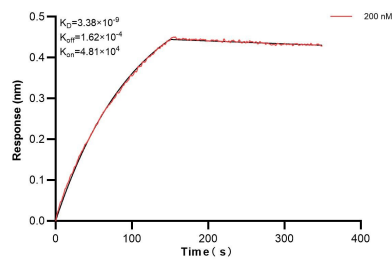
Sandwich ELISA standard curve of MP02651-2, Human Resistin Recombinant Matched Antibody Pair - PBS only. 86757-2-PBS was coated to a plate as the capture antibody and incubated with serial dilutions of standard Eg5393. 86757-3-PBS was HRP conjugated as the detection antibody. Range: 39.1-2500 pg/mL.



The mean Resistin concentration was determined to be 38.1 ng/mL in human serum.



Cytometric bead array standard curve of MP02651-1, Resistin Recombinant Matched Antibody Pair, PBS Only. Capture antibody: 86757-2-PBS. Detection antibody: 86757-1-PBS. Standard: Eg5393. Range: 0.312-40 ng/mL.



Biolayer interferometry (BLI) kinetic assay of 86757-2-PBS against Human RETN was performed. The affinity constant is 3.38 nM.