

For Research Use Only

Serpin A4/Kallistatin Recombinant monoclonal antibody, PBS Only (Detector)

Catalog Number: 86758-1-PBS



Basic Information

Catalog Number: 86758-1-PBS	GenBank Accession Number: NM_001289033.1	Purification Method: Protein A purification
Size: 100ug , Concentration: 1 mg/ml by Nanodrop;	GeneID (NCBI): 5267	CloneNo.: 251716B4
Source: Rabbit	UNIPROT ID: P29622	
Isotype: IgG	Full Name: serpin peptidase inhibitor, clade A (alpha-1 antiproteinase, antitrypsin), member 4	
Immunogen Catalog Number: EG4707	Calculated MW: 49 kDa	

Applications

Tested Applications:
Cytometric bead array, Sandwich ELISA, Indirect ELISA

Species Specificity:
human

Product Information

86758-1-PBS targets Serpin A4/Kallistatin as part of a matched antibody pair:

MP02653-1: 86758-2-PBS capture and 86758-1-PBS detection (validated in Cytometric bead array, Sandwich ELISA)

Unconjugated rabbit recombinant monoclonal antibody in PBS only (BSA and azide free) storage buffer at a concentration of 1 mg/mL, ready for conjugation. Created using Proteintech's proprietary in-house recombinant technology. Recombinant production enables unrivalled batch-to-batch consistency, easy scale-up, and future security of supply.

This conjugation ready format makes antibodies ideal for use in many applications including: ELISAs, multiplex assays requiring matched pairs, mass cytometry, and multiplex imaging applications. Antibody use should be optimized by the end user for each application and assay.

Storage

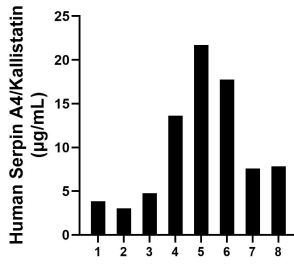
Storage:
Store at -80°C.

Storage Buffer:
PBS only, pH7.3

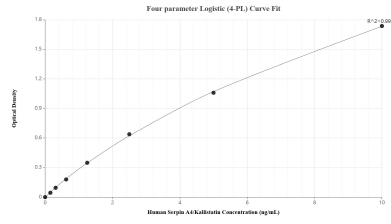
For technical support and original validation data for this product please contact:
T: 1 (888) 4PTGLAB (1-888-478-4522) (toll free in USA), or 1(312) 455-8498 (outside USA) E: proteintech@ptglab.com
W: ptglab.com

This product is exclusively available under Proteintech Group brand and is not available to purchase from any other manufacturer.

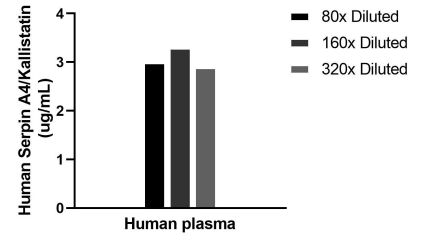
Selected Validation Data



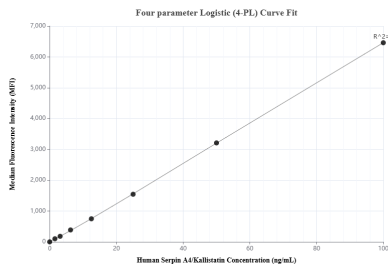
Plasma of eight individual healthy human donors was measured. The Serpin A4/Kallistatin concentration of detected samples was determined to be 10.78 µg/mL with a range of 3.02-21.69 µg/mL.



Sandwich ELISA standard curve of MP02653-1, Human Serpin A4/Kallistatin Recombinant Matched Antibody Pair - PBS only. 86758-2-PBS was coated to a plate as the capture antibody and incubated with serial dilutions of standard Eg4707. 86758-1-PBS was HRP conjugated as the detection antibody. Range: 0.156-10 ng/mL.



The mean Serpin A4/Kallistatin concentration was determined to be 3.0 µg/mL in human plasma.



Cytometric bead array standard curve of MP02653-1, Serpin A4/Kallistatin Recombinant Matched Antibody Pair, PBS Only. Capture antibody: 86758-2-PBS. Detection antibody: 86758-1-PBS. Standard: Eg4707. Range: 1.562-100 ng/mL.