

For Research Use Only

# MINA Recombinant monoclonal antibody, PBS Only

Catalog Number: 86760-3-PBS



## Basic Information

**Catalog Number:**

86760-3-PBS

**Size:**

100ug, Concentration: 1 mg/ml by Nanodrop;

**Source:**

Rabbit

**Isotype:**

IgG

**Immunogen Catalog Number:**

AG2838

**GenBank Accession Number:**

BC014928

**GeneID (NCBI):**

84864

**UNIPROT ID:**

Q8IUF8

**Full Name:**

MYC induced nuclear antigen

**Calculated MW:**

465 aa, 53 kDa

**Observed MW:**

53 kDa

**Purification Method:**

Protein A purification

**CloneNo.:**

251692F5

## Applications

**Tested Applications:**

WB, IF/ICC, Indirect ELISA

**Species Specificity:**

human

## Background Information

MINA, also named as MDIG, MINA53 and NO52, belongs to the MINA53/NO66 family. It is involved in cellular proliferation. MINA may play an important role in cell growth and survival. It is involved in ribosome biogenesis, most likely during the assembly process of pre-ribosomal particles. The transcriptional repressor MINA has been shown to repress IL4 gene expression by directly binding to its promoter, thereby, controlling TH2 bias. (PMID:21499227)

## Storage

**Storage:**

Store at -80°C.

**Storage Buffer:**

PBS only, pH7.3

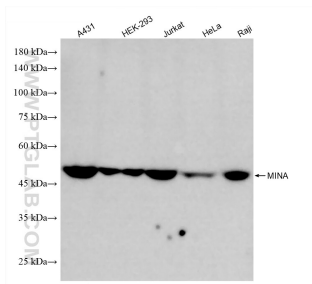
For technical support and original validation data for this product please contact:

T: 1 (888) 4PTGLAB (1-888-478-4522) (toll free in USA), or 1(312) 455-8498 (outside USA)

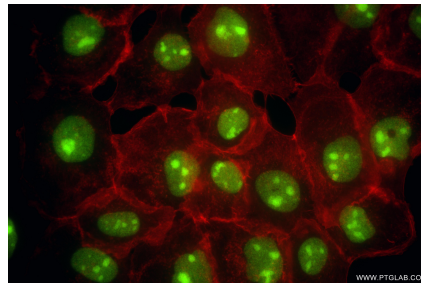
E: [proteintech@ptglab.com](mailto:proteintech@ptglab.com)  
W: [ptglab.com](http://ptglab.com)

**This product is exclusively available under Proteintech Group brand and is not available to purchase from any other manufacturer.**

## Selected Validation Data



Various lysates were subjected to SDS PAGE followed by western blot with 86760-3-RR (MINA antibody) at dilution of 1:10000 incubated at room temperature for 1.5 hours. This data was developed using the same antibody clone with 86760-3-PBS in a different storage buffer formulation.



Immunofluorescent analysis of (4% PFA) fixed A431 cells using MINA antibody (86760-3-RR, Clone: 251692F5) at dilution of 1:1000 and CoraLite® 488-Conjugated Goat Anti-Rabbit IgG(H+L) (SA00013-2), CL594-Phalloidin (red). This data was developed using the same antibody clone with 86760-3-PBS in a different storage buffer formulation.