

For Research Use Only

ATP13A1 Recombinant monoclonal antibody, PBS Only

Catalog Number:86762-3-PBS



Basic Information

Catalog Number:

86762-3-PBS

Size:

100ug , Concentration: 1 mg/ml by Nanodrop;

Source:

Rabbit

Isotype:

IgG

Immunogen Catalog Number:

AG9174

GenBank Accession Number:

BC009302

GeneID (NCBI):

57130

UNIPROT ID:

Q9HD20

Full Name:

ATPase type 13A1

Calculated MW:

976 aa, 109 kDa

Observed MW:

120-130 kDa

Purification Method:

Protein A purification

CloneNo.:

251765A3

Applications

Tested Applications:

WB, IHC, IF/ICC, Indirect ELISA

Species Specificity:

human, mouse

Background Information

ATP13A1 is a P-type ATPase, mainly involved in the transport of cations within cells. It plays an important role in maintaining intracellular ion homeostasis and membrane potential. ATP13A1 acts as a dislocase that mediates the ATP-dependent extraction of mislocalized mitochondrial transmembrane proteins from the endoplasmic reticulum membrane (PubMed:32973005).

Storage

Storage:

Store at -80°C.

Storage Buffer:

PBS only, pH7.3

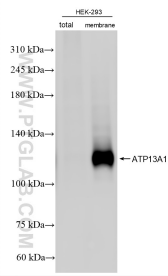
For technical support and original validation data for this product please contact:

T: 1 (888) 4PTGLAB (1-888-478-4522) (toll free in USA), or 1(312) 455-8498 (outside USA)

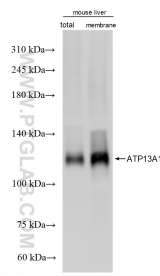
E: proteintech@ptglab.com
W: ptglab.com

This product is exclusively available under Proteintech Group brand and is not available to purchase from any other manufacturer.

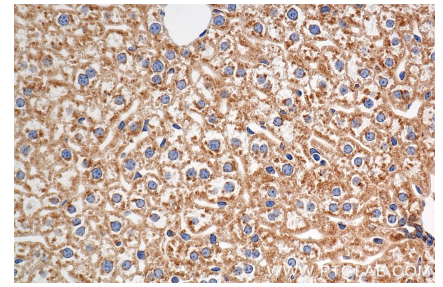
Selected Validation Data



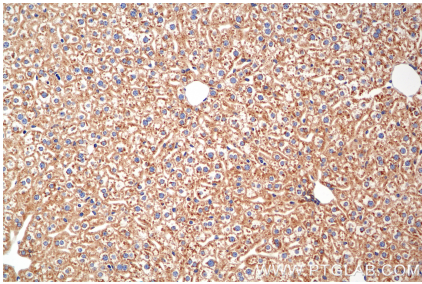
37°C incubated HEK-293 cells were subjected to SDS PAGE followed by western blot with 86762-3-RR (ATP13A1 antibody) at dilution of 1:3000 incubated at room temperature for 1.5 hours. This data was developed using the same antibody clone with 86762-3-PBS in a different storage buffer formulation.



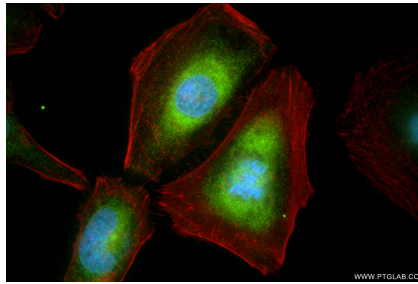
37°C incubated mouse liver tissue were subjected to SDS PAGE followed by western blot with 86762-3-RR (ATP13A1 antibody) at dilution of 1:3000 incubated at room temperature for 1.5 hours. This data was developed using the same antibody clone with 86762-3-PBS in a different storage buffer formulation.



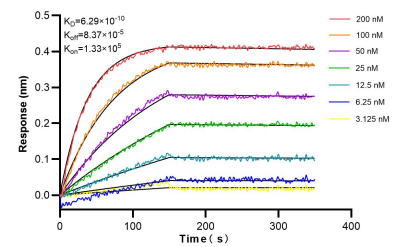
Immunohistochemical analysis of paraffin-embedded mouse liver tissue slide using 86762-3-RR (ATP13A1 antibody) at dilution of 1:500 (under 40x lens). Heat mediated antigen retrieval with Tris-EDTA buffer (pH 9.0). This data was developed using the same antibody clone with 86762-3-PBS in a different storage buffer formulation.



Immunohistochemical analysis of paraffin-embedded mouse liver tissue slide using 86762-3-RR (ATP13A1 antibody) at dilution of 1:500 (under 20x lens). Heat mediated antigen retrieval with Tris-EDTA buffer (pH 9.0). This data was developed using the same antibody clone with 86762-3-PBS in a different storage buffer formulation.



Immunofluorescent analysis of (4% PFA) fixed HeLa cells using ATP13A1 antibody (86762-3-RR, Clone: 251765A3) at dilution of 1:500 and Coralite®488-Conjugated Goat Anti-Rabbit IgG(H+L) (SA00013-2), CL594-Phalloidin (red). This data was developed using the same antibody clone with 86762-3-PBS in a different storage buffer formulation.



Bi-layer interferometry (BLI) kinetic assays of 86762-3-RR against Human ATP13A1 were performed. The affinity constant is 0.629 nM.