

For Research Use Only

ATP13A1 Recombinant monoclonal antibody

Catalog Number:86762-3-RR



Basic Information

Catalog Number: 86762-3-RR	GenBank Accession Number: BC009302	Purification Method: Protein A purification
Size: 100ul , Concentration: 1000 µg/ml by Nanodrop;	GeneID (NCBI): 57130	CloneNo.: 251765A3
Source: Rabbit	UNIPROT ID: Q9HD20	Recommended Dilutions: WB: 1:1000-1:6000 IHC: 1:250-1:1000 IF/ICC: 1:250-1:1000
Isotype: IgG	Full Name: ATPase type 13A1	
Immunogen Catalog Number: AG9174	Calculated MW: 976 aa, 109 kDa	
	Observed MW: 120-130 kDa	

Applications

Tested Applications:
WB, IHC, IF/ICC, ELISA

Species Specificity:
human, mouse

Note-IHC: suggested antigen retrieval with TE buffer pH 9.0; (*) Alternatively, antigen retrieval may be performed with citrate buffer pH 6.0

Positive Controls:

WB : 37°C incubated HEK-293 cells, 37°C incubated mouse liver tissue

IHC : mouse liver tissue,

IF/ICC : HeLa cells,

Background Information

ATP13A1 is a P-type ATPase, mainly involved in the transport of cations within cells. It plays an important role in maintaining intracellular ion homeostasis and membrane potential. ATP13A1 acts as a dislocase that mediates the ATP-dependent extraction of mislocalized mitochondrial transmembrane proteins from the endoplasmic reticulum membrane (PubMed:32973005).

Storage

Storage:

Store at -20°C. Stable for one year after shipment.

Storage Buffer:

PBS with 0.02% sodium azide and 50% glycerol, pH7.3

Aliquoting is unnecessary for -20°C storage

*** 20ul sizes contain 0.1% BSA

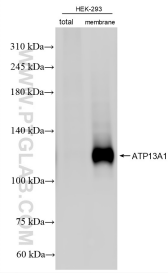
For technical support and original validation data for this product please contact:

T: 1 (888) 4PTGLAB (1-888-478-4522) (toll free in USA), or 1(312) 455-8498 (outside USA)

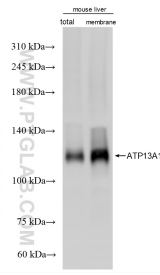
E: proteintech@ptglab.com
W: ptglab.com

This product is exclusively available under Proteintech Group brand and is not available to purchase from any other manufacturer.

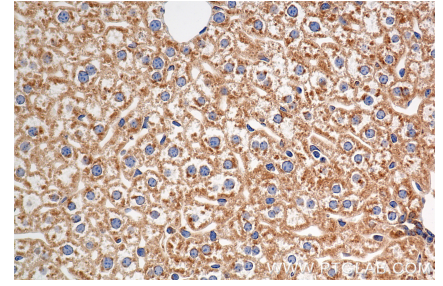
Selected Validation Data



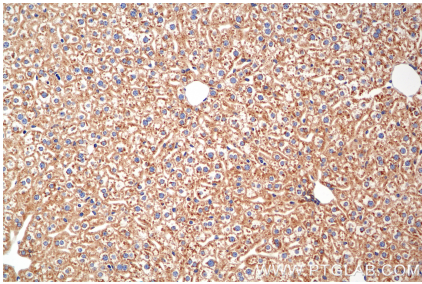
37°C incubated HEK-293 cells were subjected to SDS PAGE followed by western blot with 86762-3-RR (ATP13A1 antibody) at dilution of 1:3000 incubated at room temperature for 1.5 hours.



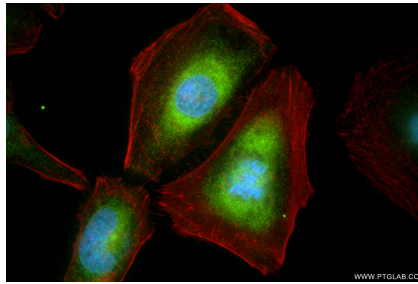
37°C incubated mouse liver tissue were subjected to SDS PAGE followed by western blot with 86762-3-RR (ATP13A1 antibody) at dilution of 1:3000 incubated at room temperature for 1.5 hours.



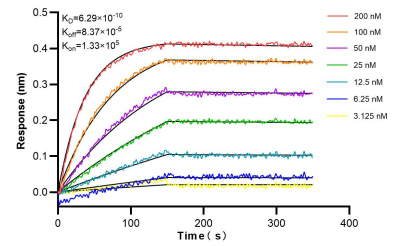
Immunohistochemical analysis of paraffin-embedded mouse liver tissue slide using 86762-3-RR (ATP13A1 antibody) at dilution of 1:500 (under 40x lens). Heat mediated antigen retrieval with Tris-EDTA buffer (pH 9.0).



Immunohistochemical analysis of paraffin-embedded mouse liver tissue slide using 86762-3-RR (ATP13A1 antibody) at dilution of 1:500 (under 20x lens). Heat mediated antigen retrieval with Tris-EDTA buffer (pH 9.0).



Immunofluorescent analysis of (4% PFA) fixed HeLa cells using ATP13A1 antibody (86762-3-RR, Clone: 251765A3) at dilution of 1:500 and CoraLite@488-Conjugated Goat Anti-Rabbit IgG(H+L) (SA00013-2), CL594-Phalloidin (red).



Bi-layer interferometry (BLI) kinetic assays of 86762-3-RR against Human ATP13A1 were performed. The affinity constant is 0.629 nM.