

For Research Use Only

Rat PAI-1/Serpin E1 Recombinant monoclonal antibody, PBS Only (Detector)

Catalog Number: 86765-1-PBS



Basic Information

Catalog Number: 86765-1-PBS	GenBank Accession Number: NM_012620.1	Purification Method: Protein A purification
Size: 100ug, Concentration: 1 mg/ml by Nanodrop;	GeneID (NCBI): 24617	CloneNo.: 250718F11
Source: Rabbit	UNIPROT ID: P20961	
Isotype: IgG	Full Name: serine (or cysteine) peptidase inhibitor, clade E, member 1	
Immunogen Catalog Number: EG3256	Calculated MW: 45 kDa	

Applications

Tested Applications:
Sandwich ELISA, Indirect ELISA

Species Specificity:
rat

Product Information

86765-1-PBS targets PAI-1/Serpin E1 as part of a matched antibody pair:

MP02642-1: 86765-2-PBS capture and 86765-1-PBS detection (validated in Sandwich ELISA)

Unconjugated rabbit recombinant monoclonal antibody in PBS only (BSA and azide free) storage buffer at a concentration of 1 mg/mL, ready for conjugation. Created using Proteintech's proprietary in-house recombinant technology. Recombinant production enables unrivalled batch-to-batch consistency, easy scale-up, and future security of supply.

This conjugation ready format makes antibodies ideal for use in many applications including: ELISAs, multiplex assays requiring matched pairs, mass cytometry, and multiplex imaging applications. Antibody use should be optimized by the end user for each application and assay.

Storage

Storage:
Store at -80°C.

Storage Buffer:
PBS only, pH7.3

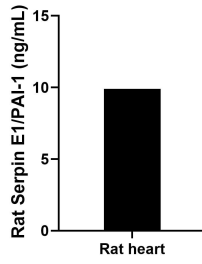
For technical support and original validation data for this product please contact:

T: 1 (888) 4PTGLAB (1-888-478-4522) (toll free in USA), or 1(312) 455-8498 (outside USA)

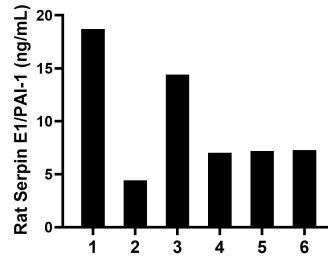
E: proteintech@ptglab.com
W: ptglab.com

This product is exclusively available under Proteintech Group brand and is not available to purchase from any other manufacturer.

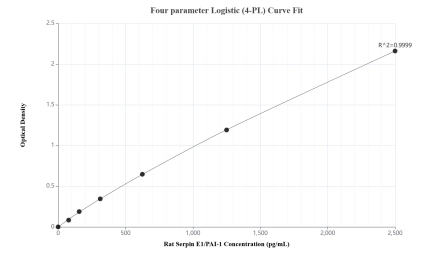
Selected Validation Data



The mean Serpin E1/PAI-1 concentration was determined to be 9.90 ng/mL in rat heart extract based on a 6.70 mg/mL extract load.



Serum of six rats was measured. The Serpin E1/PAI-1 concentration of detected samples was determined to be 9.84 ng/mL with a range of 4.42-18.71 ng/mL.



Sandwich ELISA standard curve of MP02642-1, Rat Serpin E1/PAI-1 Recombinant Matched Antibody Pair - PBS only. 86765-2-PBS was coated to a plate as the capture antibody and incubated with serial dilutions of standard Eg3256. 86765-1-PBS was HRP conjugated as the detection antibody. Range: 78.1-2500 pg/mL.