

For Research Use Only

# MICB Recombinant monoclonal antibody, PBS Only (Detector)

Catalog Number: 86774-2-PBS



## Basic Information

<b>Catalog Number:</b> 86774-2-PBS	<b>GenBank Accession Number:</b> NM_005931.4	<b>Purification Method:</b> Protein A purification
<b>Size:</b> 100ug, Concentration: 1 mg/ml by Nanodrop;	<b>GeneID (NCBI):</b> 4277	<b>CloneNo.:</b> 251684C7
<b>Source:</b> Rabbit	<b>UNIPROT ID:</b> Q29980	
<b>Isotype:</b> IgG	<b>Full Name:</b> MHC class I polypeptide-related sequence B	
<b>Immunogen Catalog Number:</b> EG6138	<b>Calculated MW:</b> 43 kDa	

## Applications

**Tested Applications:**  
Sandwich ELISA, Indirect ELISA

**Species Specificity:**  
human

## Product Information

86774-2-PBS targets MICB as part of a matched antibody pair:

MP02835-1: 86774-3-PBS capture and 86774-2-PBS detection (validated in Sandwich ELISA)

Unconjugated rabbit recombinant monoclonal antibody in PBS only (BSA and azide free) storage buffer at a concentration of 1 mg/mL, ready for conjugation. Created using Proteintech's proprietary in-house recombinant technology. Recombinant production enables unrivalled batch-to-batch consistency, easy scale-up, and future security of supply.

This conjugation ready format makes antibodies ideal for use in many applications including: ELISAs, multiplex assays requiring matched pairs, mass cytometry, and multiplex imaging applications. Antibody use should be optimized by the end user for each application and assay.

## Storage

**Storage:**  
Store at -80°C.

**Storage Buffer:**  
PBS only, pH7.3

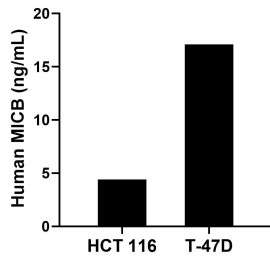
For technical support and original validation data for this product please contact:

T: 1 (888) 4PTGLAB (1-888-478-4522) (toll free in USA), or 1(312) 455-8498 (outside USA)

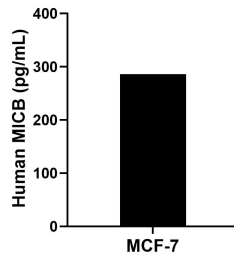
E: [proteintech@ptglab.com](mailto:proteintech@ptglab.com)  
W: [ptglab.com](http://ptglab.com)

**This product is exclusively available under Proteintech Group brand and is not available to purchase from any other manufacturer.**

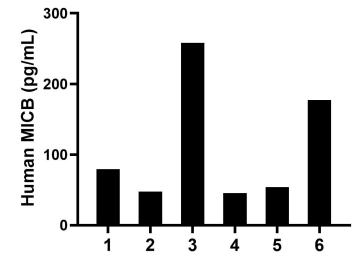
## Selected Validation Data



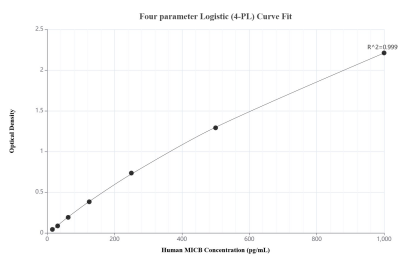
The mean MICB concentration was determined to be 4.4 ng/mL in HCT 116 cell extract based on a 1.3 mg/mL extract load and 17.1 ng/mL in T-47D cell extract based on a 1.2 mg/mL extract load.



MCF-7 were cultured in DMEM supplemented with 10% fetal bovine serum, 2.5 mM L-glutamine, 100 U/mL penicillin, and 100 µg/mL streptomycin sulfate. An aliquot of the cell culture supernate was removed, assayed for human MICB, and measured 285.8 pg/mL.



Serum of six individual healthy human donors was measured. The MICB concentration of detected samples was determined to be 110.3 pg/mL with a range of 45.5-258.0 pg/mL.



Sandwich ELISA standard curve of MPO2835-1, Human MICB Recombinant Matched Antibody Pair - PBS only. 86774-3-PBS was coated to a plate as the capture antibody and incubated with serial dilutions of standard Eg6138. 86774-2-PBS was HRP conjugated as the detection antibody. Range: 15.6-1000 pg/mL.