

For Research Use Only

MICB Recombinant monoclonal antibody, PBS Only (Capture)

Catalog Number:86774-3-PBS



Basic Information

Catalog Number: 86774-3-PBS	GenBank Accession Number: NM_005931.4	Purification Method: Protein A purification
Size: 100ug , Concentration: 1 mg/ml by Nanodrop;	GeneID (NCBI): 4277	CloneNo.: 251684B3
Source: Rabbit	UNIPROT ID: Q29980	
Isotype: IgG	Full Name: MHC class I polypeptide-related sequence B	
Immunogen Catalog Number: EG6138	Calculated MW: 43 kDa	

Applications

Tested Applications:
Sandwich ELISA, Indirect ELISA

Species Specificity:
human

Product Information

86774-3-PBS targets MICB as part of a matched antibody pair:

MP02835-1: 86774-3-PBS capture and 86774-2-PBS detection (validated in Sandwich ELISA)

Unconjugated rabbit recombinant monoclonal antibody in PBS only (BSA and azide free) storage buffer at a concentration of 1 mg/mL, ready for conjugation. Created using Proteintech's proprietary in-house recombinant technology. Recombinant production enables unrivalled batch-to-batch consistency, easy scale-up, and future security of supply.

This conjugation ready format makes antibodies ideal for use in many applications including: ELISAs, multiplex assays requiring matched pairs, mass cytometry, and multiplex imaging applications. Antibody use should be optimized by the end user for each application and assay.

Storage

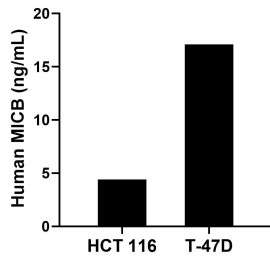
Storage:
Store at -80°C.

Storage Buffer:
PBS only, pH7.3

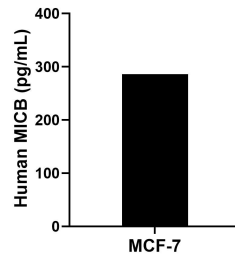
For technical support and original validation data for this product please contact:
T: 1 (888) 4PTGLAB (1-888-478-4522) (toll free in USA), or 1(312) 455-8498 (outside USA) E: proteintech@ptglab.com
W: ptglab.com

This product is exclusively available under Proteintech Group brand and is not available to purchase from any other manufacturer.

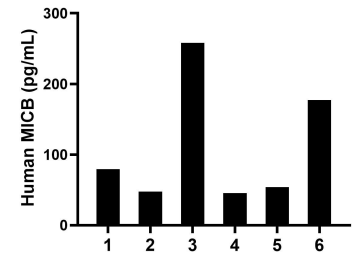
Selected Validation Data



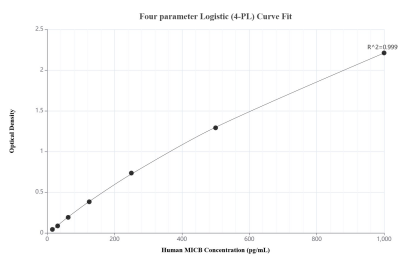
The mean MICB concentration was determined to be 4.4 ng/mL in HCT 116 cell extract based on a 1.3 mg/mL extract load and 17.1 ng/mL in T-47D cell extract based on a 1.2 mg/mL extract load.



MCF-7 were cultured in DMEM supplemented with 10% fetal bovine serum, 2.5 mM L-glutamine, 100 U/mL penicillin, and 100 µg/mL streptomycin sulfate. An aliquot of the cell culture supernate was removed, assayed for human MICB, and measured 285.8 pg/mL.



Serum of six individual healthy human donors was measured. The MICB concentration of detected samples was determined to be 110.3 pg/mL with a range of 45.5-258.0 pg/mL.



Sandwich ELISA standard curve of MPO2835-1, Human MICB Recombinant Matched Antibody Pair - PBS only. 86774-3-PBS was coated to a plate as the capture antibody and incubated with serial dilutions of standard Eg6138. 86774-2-PBS was HRP conjugated as the detection antibody. Range: 15.6-1000 pg/mL.