

For Research Use Only

HFE2 Recombinant monoclonal antibody

Catalog Number: 86775-3-RR



Basic Information

Catalog Number: 86775-3-RR	GenBank Accession Number: BC017926	Purification Method: Protein A purification
Size: 100ul , Concentration: 1000 µg/ml by Nanodrop;	GeneID (NCBI): 148738	CloneNo.: 251477G9
Source: Rabbit	UNIPROT ID: Q6ZVN8	Recommended Dilutions: WB: 1:1000-1:6000 IF/ICC: 1:50-1:500
Isotype: IgG	Full Name: hemochromatosis type 2 (juvenile)	
Immunogen Catalog Number: AG2354	Calculated MW: 426 aa, 45 kDa	
	Observed MW: 45 kDa	

Applications

Tested Applications:

WB, IF/ICC, ELISA

Species Specificity:

human, mouse

Positive Controls:

WB : HEK-293T cells, HeLa cells, HepG2 cells, human platelets, human skeletal muscle tissue, human heart tissue, mouse liver tissue

IF/ICC : HepG2 cells,

Background Information

HFE2, also known as Hemojuvelin (HJV), is a GPI-anchored protein that binds to new proteins and bone morphogenetic proteins (BMP2 and BMP4) and can be released from the cell membrane. HFE2 plays a key role in the regulation of hepcidin, which regulates the absorption and recycling of iron. (PMID: 17331953; PMID: 17938254)

Storage

Storage:

Store at -20°C. Stable for one year after shipment.

Storage Buffer:

PBS with 0.02% sodium azide and 50% glycerol, pH7.3

Aliquoting is unnecessary for -20°C storage

*** 20ul sizes contain 0.1% BSA

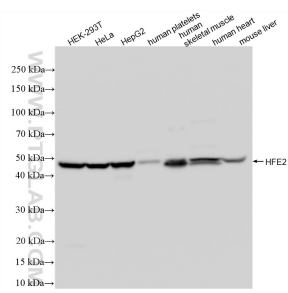
For technical support and original validation data for this product please contact:

T: 1 (888) 4PTGLAB (1-888-478-4522) (toll free in USA), or 1(312) 455-8498 (outside USA)

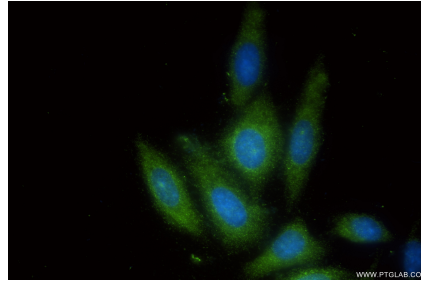
E: proteintech@ptglab.com
W: ptglab.com

This product is exclusively available under Proteintech Group brand and is not available to purchase from any other manufacturer.

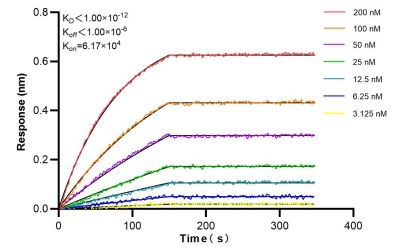
Selected Validation Data



Various lysates were subjected to SDS PAGE followed by western blot with 86775-3-RR (HFE2 antibody) at dilution of 1:3000 incubated at room temperature for 1.5 hours.



Immunofluorescent analysis of (-20°C Ethanol) fixed HepG2 cells using HFE2 antibody (86775-3-RR, Clone: 251477G9) at dilution of 1:200 and CoraLite® 488-Conjugated Goat Anti-Rabbit IgG(H+L) (SA00013-2).



Biolayer interferometry (BLI) kinetic assays of 86775-3-RR against Human HFE2 were performed. The affinity constant is below 1 pM.