

For Research Use Only

CDH3 Recombinant monoclonal antibody, PBS Only (Capture)

Catalog Number:86776-3-PBS



Basic Information

Catalog Number: 86776-3-PBS	GenBank Accession Number: NM_001793.5	Purification Method: Protein A purification
Size: 100ug , Concentration: 1 mg/ml by Nanodrop;	GeneID (NCBI): 1001	CloneNo.: 251775D9
Source: Rabbit	UNIPROT ID: P22223-1	
Isotype: IgG	Full Name: cadherin 3, type 1, P-cadherin (placental)	
Immunogen Catalog Number: EG5236	Calculated MW: 91 kDa	

Applications

Tested Applications:
Sandwich ELISA, Indirect ELISA

Species Specificity:
human

Product Information

86776-3-PBS targets CDH3 as part of a matched antibody pair:

MP02747-1: 86776-3-PBS capture and 86776-2-PBS detection (validated in Sandwich ELISA)

Unconjugated rabbit recombinant monoclonal antibody in PBS only (BSA and azide free) storage buffer at a concentration of 1 mg/mL, ready for conjugation. Created using Proteintech's proprietary in-house recombinant technology. Recombinant production enables unrivalled batch-to-batch consistency, easy scale-up, and future security of supply.

This conjugation ready format makes antibodies ideal for use in many applications including: ELISAs, multiplex assays requiring matched pairs, mass cytometry, and multiplex imaging applications. Antibody use should be optimized by the end user for each application and assay.

Storage

Storage:
Store at -80°C.

Storage Buffer:
PBS only, pH7.3

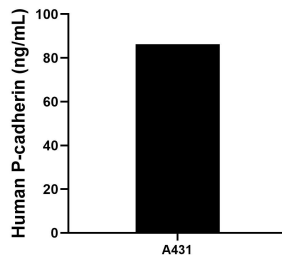
For technical support and original validation data for this product please contact:

T: 1 (888) 4PTGLAB (1-888-478-4522) (toll free in USA), or 1(312) 455-8498 (outside USA)

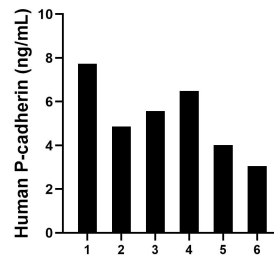
E: proteintech@ptglab.com
W: ptglab.com

This product is exclusively available under Proteintech Group brand and is not available to purchase from any other manufacturer.

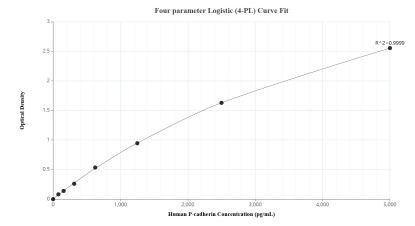
Selected Validation Data



The mean P-cadherin concentration was determined to be 86.2 ng/mL in A431 cell extract based on a 1.5 mg/mL extract load.



Serum of six individual healthy human donors was measured. The P-cadherin concentration of detected samples was determined to be 5.3 ng/mL with a range of 3.0-7.7 ng/mL.



Sandwich ELISA standard curve of MP02747-1, Human P-cadherin Recombinant Matched Antibody Pair - PBS only. 86776-3-PBS was coated to a plate as the capture antibody and incubated with serial dilutions of standard Eg5236. 86776-2-PBS was HRP conjugated as the detection antibody. Range: 78.1-5000 pg/mL.