

For Research Use Only

CCL3 Recombinant monoclonal antibody, PBS Only (Capture/Detector)

Catalog Number:86780-1-PBS



Basic Information

Catalog Number: 86780-1-PBS	GenBank Accession Number: BC071834	Purification Method: Protein A purification
Size: 100ug, Concentration: 1 mg/ml by Nanodrop;	GeneID (NCBI): 6348	CloneNo.: 251524A10
Source: Rabbit	UNIPROT ID: P10147	
Isotype: IgG	Full Name: chemokine (C-C motif) ligand 3	
Immunogen Catalog Number: EG3309	Calculated MW: 92 aa, 10 kDa	

Applications

Tested Applications:
Cytometric bead array, Sandwich ELISA, Indirect ELISA

Species Specificity:
human

Product Information

86780-1-PBS targets CCL3 as part of a matched antibody pair:

MP02665-1: 86780-2-PBS capture and 86780-1-PBS detection (validated in Cytometric bead array)

MP02665-2: 86780-1-PBS capture and 86780-4-PBS detection (validated in Sandwich ELISA)

Unconjugated rabbit recombinant monoclonal antibody in PBS only (BSA and azide free) storage buffer at a concentration of 1 mg/mL, ready for conjugation. Created using Proteintech's proprietary in-house recombinant technology. Recombinant production enables unrivalled batch-to-batch consistency, easy scale-up, and future security of supply.

This conjugation ready format makes antibodies ideal for use in many applications including: ELISAs, multiplex assays requiring matched pairs, mass cytometry, and multiplex imaging applications. Antibody use should be optimized by the end user for each application and assay.

Storage

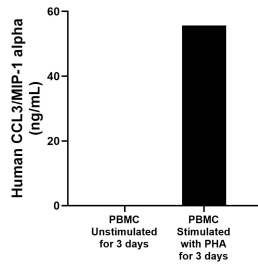
Storage:
Store at -80°C.

Storage Buffer:
PBS only, pH7.3

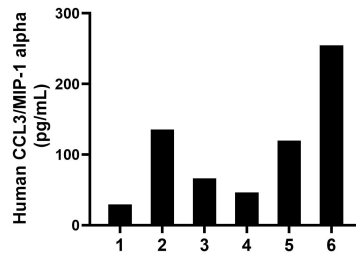
For technical support and original validation data for this product please contact:
T: 1 (888) 4PTGLAB (1-888-478-4522) (toll free in USA), or 1(312) 455-8498 (outside USA) E: proteintech@ptglab.com
W: ptglab.com

This product is exclusively available under Proteintech Group brand and is not available to purchase from any other manufacturer.

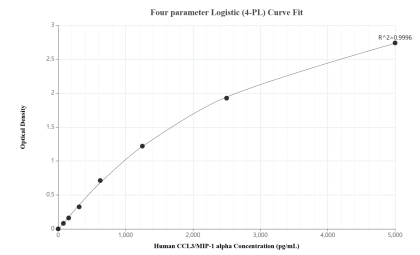
Selected Validation Data



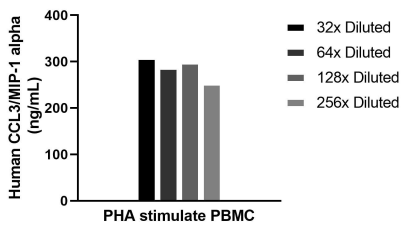
Human peripheral blood mononuclear cells (PBMC) were cultured unstimulated or stimulated with 10 µg/mL PHA for 3 days. The mean CCL3/MIP-1 alpha concentration was determined to be 0.1 ng/mL in unstimulated PBMC supernatant, 55.6 ng/mL in PHA stimulated PBMC supernatant.



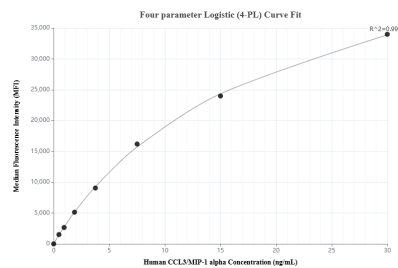
Plasma of six individual healthy human donors was measured. The CCL3/MIP-1 alpha concentration of detected samples was determined to be 108.7 pg/mL with a range of 29.6-254.7 pg/mL.



Sandwich ELISA standard curve of MP02665-2, Human CCL3/MIP-1 alpha Recombinant Matched Antibody Pair - PBS only. 86780-1-PBS was coated to a plate as the capture antibody and incubated with serial dilutions of standard Eg3309. 86780-4-PBS was HRP conjugated as the detection antibody. Range: 78.1-5000 pg/mL.



Human peripheral blood mononuclear cells (1×10^6 cells/mL) were cultured in RPMI supplemented with 8% fetal bovine serum, 50 µM β-mercaptoethanol, 2 mM L-glutamine, 100 U/mL penicillin and 100 µg/mL streptomycin sulfate. Cells were stimulated with 10 µg/mL PHA. Aliquots of the cell culture supernatants were removed on days 5 assayed for levels of human CCL3/MIP-1 alpha, and measured 286.0 ng/mL.



Cytometric bead array standard curve of MP02665-1, CCL3/MIP-1 alpha Recombinant Matched Antibody Pair, PBS Only. Capture antibody: 86780-2-PBS. Detection antibody: 86780-1-PBS. Standard: Eg3309. Range: 0.469-60 ng/mL.