

For Research Use Only

# CCL3 Recombinant monoclonal antibody, PBS Only (Detector)

Catalog Number:86780-4-PBS



## Basic Information

<b>Catalog Number:</b> 86780-4-PBS	<b>GenBank Accession Number:</b> BC071834	<b>Purification Method:</b> Protein A purification
<b>Size:</b> 100ug , Concentration: 1 mg/ml by Nanodrop;	<b>GeneID (NCBI):</b> 6348	<b>CloneNo.:</b> 251524F2
<b>Source:</b> Rabbit	<b>UNIPROT ID:</b> P10147	
<b>Isotype:</b> IgG	<b>Full Name:</b> chemokine (C-C motif) ligand 3	
<b>Immunogen Catalog Number:</b> EG3309	<b>Calculated MW:</b> 92 aa, 10 kDa	

## Applications

**Tested Applications:**  
Sandwich ELISA, Indirect ELISA

**Species Specificity:**  
human

## Product Information

86780-4-PBS targets CCL3 as part of a matched antibody pair:

MP02665-2: 86780-1-PBS capture and 86780-4-PBS detection (validated in Sandwich ELISA)

Unconjugated rabbit recombinant monoclonal antibody in PBS only (BSA and azide free) storage buffer at a concentration of 1 mg/mL, ready for conjugation. Created using Proteintech's proprietary in-house recombinant technology. Recombinant production enables unrivalled batch-to-batch consistency, easy scale-up, and future security of supply.

This conjugation ready format makes antibodies ideal for use in many applications including: ELISAs, multiplex assays requiring matched pairs, mass cytometry, and multiplex imaging applications. Antibody use should be optimized by the end user for each application and assay.

## Storage

**Storage:**  
Store at -80°C.

**Storage Buffer:**  
PBS only, pH7.3

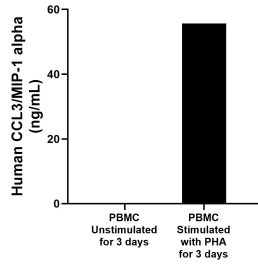
For technical support and original validation data for this product please contact:

T: 1 (888) 4PTGLAB (1-888-478-4522) (toll free in USA), or 1(312) 455-8498 (outside USA)

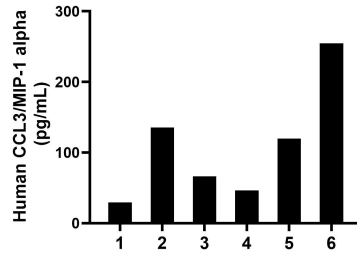
E: [proteintech@ptglab.com](mailto:proteintech@ptglab.com)  
W: [ptglab.com](http://ptglab.com)

**This product is exclusively available under Proteintech Group brand and is not available to purchase from any other manufacturer.**

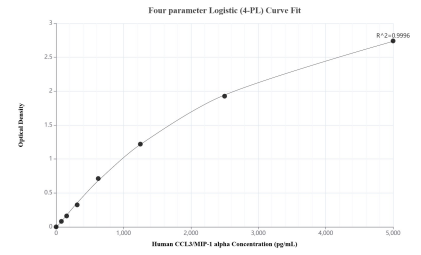
## Selected Validation Data



Human peripheral blood mononuclear cells (PBMC) were cultured unstimulated or stimulated with 10 µg/mL PHA for 3 days. The mean CCL3/MIP-1 alpha concentration was determined to be 0.1 ng/mL in unstimulated PBMC supernatant, 55.6 ng/mL in PHA stimulated PBMC supernatant.



Plasma of six individual healthy human donors was measured. The CCL3/MIP-1 alpha concentration of detected samples was determined to be 108.7 pg/mL with a range of 29.6-254.7 pg/mL.



Sandwich ELISA standard curve of MP02665-2, Human CCL3/MIP-1 alpha Recombinant Matched Antibody Pair - PBS only. 86780-1-PBS was coated to a plate as the capture antibody and incubated with serial dilutions of standard Eg3309. 86780-4-PBS was HRP conjugated as the detection antibody. Range: 78.1-5000 pg/mL.