

For Research Use Only

# AZGP1 Recombinant monoclonal antibody, PBS Only (Capture)

Catalog Number: 86781-2-PBS



## Basic Information

<b>Catalog Number:</b> 86781-2-PBS	<b>GenBank Accession Number:</b> BC033830	<b>Purification Method:</b> Protein A purification
<b>Size:</b> 100ug, Concentration: 1 mg/ml by Nanodrop;	<b>GeneID (NCBI):</b> 563	<b>CloneNo.:</b> 251605A1
<b>Source:</b> Rabbit	<b>UNIPROT ID:</b> P25311	
<b>Isotype:</b> IgG	<b>Full Name:</b> alpha-2-glycoprotein 1, zinc-binding	
<b>Immunogen Catalog Number:</b> EG6736	<b>Calculated MW:</b> 298 aa, 34 kDa	

## Applications

**Tested Applications:**  
Cytometric bead array, Sandwich ELISA, Indirect ELISA

**Species Specificity:**  
human

## Product Information

86781-2-PBS targets AZGP1 as part of a matched antibody pair:

MP02669-1: 86781-2-PBS capture and 86781-1-PBS detection (validated in Cytometric bead array)

MP02669-2: 86781-2-PBS capture and 86781-3-PBS detection (validated in Sandwich ELISA)

Unconjugated rabbit recombinant monoclonal antibody in PBS only (BSA and azide free) storage buffer at a concentration of 1 mg/mL, ready for conjugation. Created using Proteintech's proprietary in-house recombinant technology. Recombinant production enables unrivalled batch-to-batch consistency, easy scale-up, and future security of supply.

This conjugation ready format makes antibodies ideal for use in many applications including: ELISAs, multiplex assays requiring matched pairs, mass cytometry, and multiplex imaging applications. Antibody use should be optimized by the end user for each application and assay.

## Storage

**Storage:**  
Store at -80°C.  
**Storage Buffer:**  
PBS only, pH7.3

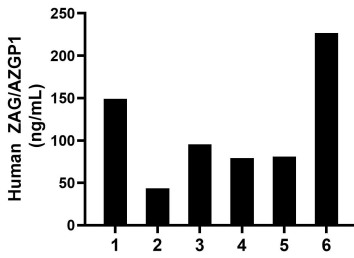
For technical support and original validation data for this product please contact:

T: 1 (888) 4PTGLAB (1-888-478-4522) (toll free in USA), or 1(312) 455-8498 (outside USA)

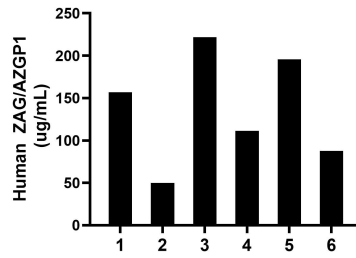
E: [proteintech@ptglab.com](mailto:proteintech@ptglab.com)  
W: [ptglab.com](http://ptglab.com)

**This product is exclusively available under Proteintech Group brand and is not available to purchase from any other manufacturer.**

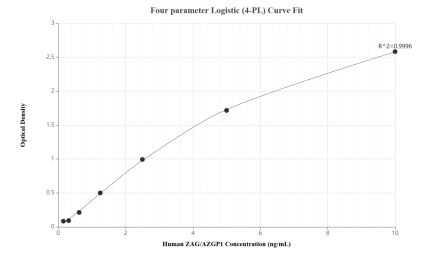
## Selected Validation Data



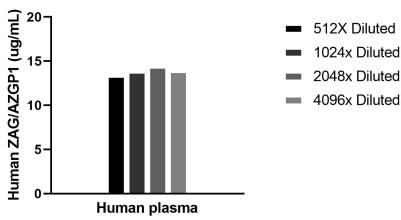
Urine of six individual healthy human donors was measured. The ZAG/AZGP1 concentration of detected samples was determined to be 112.47 ng/mL with a range of 43.71-226.60 ng/mL.



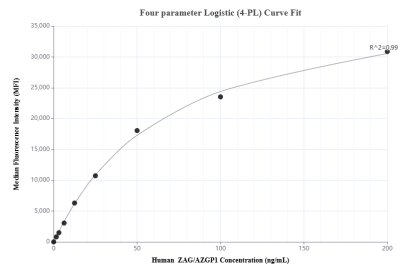
Plasma of six individual healthy human donors was measured. The ZAG/AZGP1 concentration of detected samples was determined to be 137.18 ug/mL with a range of 49.90-221.70 ug/mL.



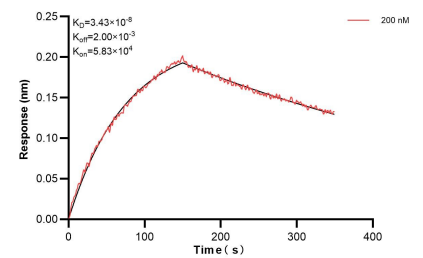
Sandwich ELISA standard curve of MP02669-2, Human ZAG/AZGP1 Recombinant Matched Antibody Pair - PBS only. 86781-2-PBS was coated to a plate as the capture antibody and incubated with serial dilutions of standard Eg6736. 86781-3-PBS was HRP conjugated as the detection antibody. Range: 0.156-10 ng/mL.



The mean ZAG/AZGP1 concentration was determined to be 13.8 ug/mL in Human plasma.



Cytometric bead array standard curve of MP02669-1, ZAG/AZGP1 Recombinant Matched Antibody Pair, PBS Only. Capture antibody: 86781-2-PBS. Detection antibody: 86781-1-PBS. Standard: Eg6736. Range: 1.562-200 ng/mL.



Bi-layer interferometry (BLI) kinetic assay of 86781-2-PBS against Human AZGP1 was performed. The affinity constant is 34.3 nM.