

For Research Use Only

Zinc Alpha 2 Glycoprotein Recombinant monoclonal antibody

Catalog Number:86781-3-RR



Basic Information

Catalog Number: 86781-3-RR	GenBank Accession Number: BC033830	Purification Method: Protein A purification
Size: 100ul , Concentration: 1000 µg/ml by Nanodrop;	GeneID (NCBI): 563	CloneNo.: 251605B9
Source: Rabbit	UNIPROT ID: P25311	Recommended Dilutions: WB: 1:5000-1:50000 IHC: 1:250-1:1000
Isotype: IgG	Full Name: alpha-2-glycoprotein 1, zinc-binding	
Immunogen Catalog Number: EG6736	Calculated MW: 298 aa, 34 kDa	
	Observed MW: 41 kDa	

Applications

Tested Applications:
WB, IHC, ELISA

Species Specificity:
human

Note-IHC: suggested antigen retrieval with TE buffer pH 9.0; (*) Alternatively, antigen retrieval may be performed with citrate buffer pH 6.0

Positive Controls:

WB : human plasma,

IHC : human breast cancer tissue,

Background Information

Zinc-alpha-2-glycoprotein (AZGP1) is a 41-kDa soluble protein normally found in body fluids, functions as a lipid mobilizing factor (PMID: 19188554). It is known to be expressed in the secretory epithelia of the liver, lung, breast, GI tract and sweat glands, sharing significant structural similarity with the class I major histocompatibility complex (MHC) antigens (PMID: 3422450). AZGP1 is involved in carcinogenesis and differentiation. Altered expression of AZGP1 has been reported in breast cancer, prostate cancer and lung adenocarcinoma, hepatocellular carcinoma, pancreatic carcinoma and oral tumors (PMID: 22625427).

Storage

Storage:

Store at -20°C. Stable for one year after shipment.

Storage Buffer:

PBS with 0.02% sodium azide and 50% glycerol, pH7.3

Aliquoting is unnecessary for -20°C storage

*** 20ul sizes contain 0.1% BSA

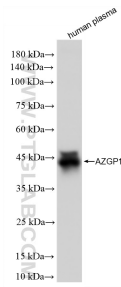
For technical support and original validation data for this product please contact:

T: 1 (888) 4PTGLAB (1-888-478-4522) (toll free in USA), or 1(312) 455-8498 (outside USA)

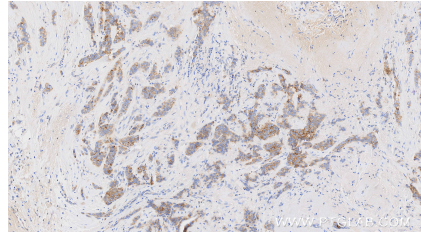
E: proteintech@ptglab.com
W: ptglab.com

This product is exclusively available under Proteintech Group brand and is not available to purchase from any other manufacturer.

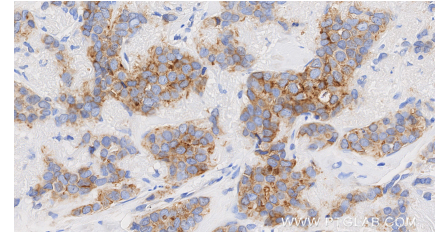
Selected Validation Data



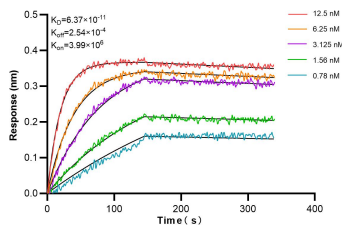
human plasma were subjected to SDS PAGE followed by western blot with 86781-3-RR (AZGP1 antibody) at dilution of 1:10000 incubated at room temperature for 1.5 hours.



Immunohistochemical analysis of paraffin-embedded human breast cancer tissue slide using 86781-3-RR (Zinc Alpha 2 Glycoprotein antibody) at dilution of 1:500 (under 10x lens). Heat mediated antigen retrieval with Tris-EDTA buffer (pH 9.0).



Immunohistochemical analysis of paraffin-embedded human breast cancer tissue slide using 86781-3-RR (Zinc Alpha 2 Glycoprotein antibody) at dilution of 1:500 (under 40x lens). Heat mediated antigen retrieval with Tris-EDTA buffer (pH 9.0).



Biolayer interferometry (BLI) kinetic assays of 86781-3-RR against Human Zinc Alpha 2 Glycoprotein were performed. The affinity constant is 63.7 pM.