

For Research Use Only

RAB10 Recombinant monoclonal antibody, PBS Only

Catalog Number: 86787-1-PBS



Basic Information

Catalog Number: 86787-1-PBS	GenBank Accession Number: BC000896	Purification Method: Protein A purification
Size: 100ug , Concentration: 1 mg/ml by Nanodrop;	GeneID (NCBI): 10890	CloneNo.: 251744G12
Source: Rabbit	UNIPROT ID: P61026	
Isotype: IgG	Full Name: RAB10, member RAS oncogene family	
Immunogen Catalog Number: AG25830	Calculated MW: 200 aa, 23 kDa	
	Observed MW: 20-23 kDa	

Applications

Tested Applications:
WB, IF/ICC, Indirect ELISA

Species Specificity:
human, mouse, rat

Background Information

RAB10 is a member of the RAB family of small GTPases, which are key regulators of vesicular trafficking. RAB proteins are cyclically controlled, requiring a GDP-GTP exchange that is facilitated by RAB guanine nucleotide exchange factors. Rab10 plays essential functional roles in development: mice are embryonic lethal when both alleles are deleted. In addition, RAB10 plays a role in maintenance and regulation of endoplasmic reticulum (ER) morphology. RAB10 function has also been linked to neuronal morphology and polarization, playing a critical role in axonal development and dendrite arborization.

Storage

Storage:
Store at -80°C.

Storage Buffer:
PBS only, pH7.3

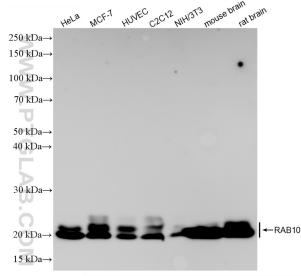
For technical support and original validation data for this product please contact:

T: 1 (888) 4PTGLAB (1-888-478-4522) (toll free in USA), or 1(312) 455-8498 (outside USA)

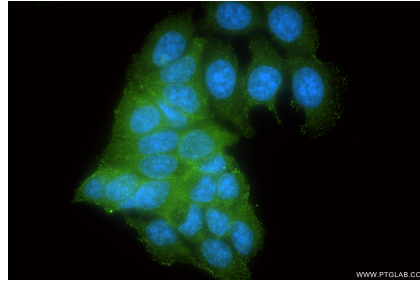
E: proteintech@ptglab.com
W: ptglab.com

This product is exclusively available under Proteintech Group brand and is not available to purchase from any other manufacturer.

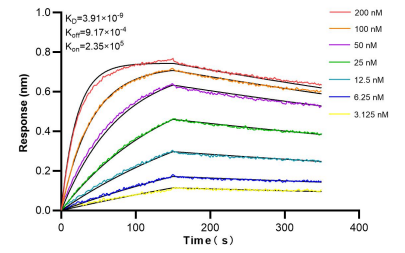
Selected Validation Data



Various lysates were subjected to SDS PAGE followed by western blot with 86787-1-RR (RAB10 antibody) at dilution of 1:10000 incubated at room temperature for 1.5 hours. This data was developed using the same antibody clone with 86787-1-PBS in a different storage buffer formulation.



Immunofluorescent analysis of (-20°C Ethanol) fixed MCF-7 cells using RAB10 antibody (86787-1-RR, Clone: 251744G12) at dilution of 1:200 and CoraLite® 488-Conjugated Goat Anti-Rabbit IgG(H+L) (SA00013-2). This data was developed using the same antibody clone with 86787-1-PBS in a different storage buffer formulation.



Bilayer interferometry (BLI) kinetic assays of 86787-1-RR against Human RAB10 were performed. The affinity constant is 3.91 nM.