

For Research Use Only

RAB10 Recombinant monoclonal antibody

Catalog Number: 86787-1-RR



Basic Information

Catalog Number: 86787-1-RR	GenBank Accession Number: BC000896	Purification Method: Protein A purification
Size: 100ul , Concentration: 1000 µg/ml by Nanodrop;	GeneID (NCBI): 10890	CloneNo.: 251744G12
Source: Rabbit	UNIPROT ID: P61026	Recommended Dilutions: WB: 1:5000-1:50000 IF/ICC: 1:50-1:500
Isotype: IgG	Full Name: RAB10, member RAS oncogene family	
Immunogen Catalog Number: AG25830	Calculated MW: 200 aa, 23 kDa	
	Observed MW: 20-23 kDa	

Applications

Tested Applications: WB, IF/ICC, ELISA	Positive Controls:
Species Specificity: human, mouse, rat	WB : HeLa cells, MCF-7 cells, HUVEC cells, C2C12 cells, NIH/3T3 cells, mouse brain tissue, rat brain tissue
	IF/ICC : MCF-7 cells,

Background Information

RAB10 is a member of the RAB family of small GTPases, which are key regulators of vesicular trafficking. RAB proteins are cyclically controlled, requiring a GDP-GTP exchange that is facilitated by RAB guanine nucleotide exchange factors. Rab10 plays essential functional roles in development: mice are embryonic lethal when both alleles are deleted. In addition, RAB10 plays a role in maintenance and regulation of endoplasmic reticulum (ER) morphology. RAB10 function has also been linked to neuronal morphology and polarization, playing a critical role in axonal development and dendrite arborization.

Storage

Storage:
Store at -20°C. Stable for one year after shipment.
Storage Buffer:
PBS with 0.02% sodium azide and 50% glycerol, pH7.3
Aliquoting is unnecessary for -20°C storage

***** 20ul sizes contain 0.1% BSA**

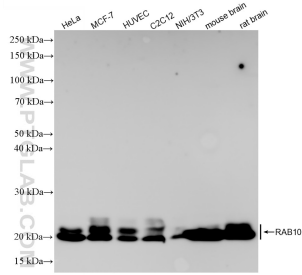
For technical support and original validation data for this product please contact:

T: 1 (888) 4PTGLAB (1-888-478-4522) (toll free in USA), or 1(312) 455-8498 (outside USA)

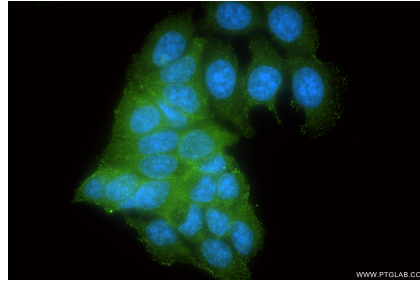
E: proteintech@ptglab.com
W: ptglab.com

This product is exclusively available under Proteintech Group brand and is not available to purchase from any other manufacturer.

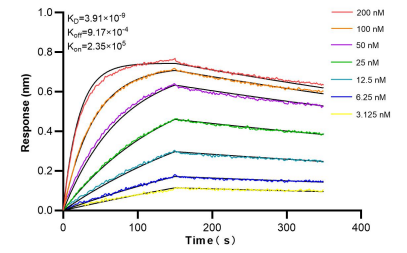
Selected Validation Data



Various lysates were subjected to SDS PAGE followed by western blot with 86787-1-RR (RAB10 antibody) at dilution of 1:10000 incubated at room temperature for 1.5 hours.



Immunofluorescent analysis of (-20°C Ethanol) fixed MCF-7 cells using RAB10 antibody (86787-1-RR, Clone: 251744G12) at dilution of 1:200 and CoraLite® 488-Conjugated Goat Anti-Rabbit IgG(H+L) (SA00013-2).



Bilayer interferometry (BLI) kinetic assays of 86787-1-RR against Human RAB10 were performed. The affinity constant is 3.91 nM.