

For Research Use Only



Cardiac Troponin I Recombinant monoclonal antibody, PBS Only (Detector)

Catalog Number: 86791-2-PBS

Basic Information

Catalog Number: 86791-2-PBS	GenBank Accession Number: BC096165	Purification Method: Protein A purification
Size: 100ug, Concentration: 1 mg/ml by Nanodrop;	GeneID (NCBI): 7137	CloneNo.: 251696G10
Source: Rabbit	UNIPROT ID: P19429	
Isotype: IgG	Full Name: troponin I type 3 (cardiac)	
Immunogen Catalog Number: AG16365	Calculated MW: 210 aa, 24 kDa	

Applications

Tested Applications:
Cytometric bead array, Indirect ELISA

Species Specificity:
human

Product Information

86791-2-PBS targets Cardiac Troponin I as part of a matched antibody pair.

MP03132-1: 86791-3-PBS capture and 86791-2-PBS detection (validated in Cytometric bead array)

Unconjugated rabbit recombinant monoclonal antibody in PBS only (BSA and azide free) storage buffer at a concentration of 1 mg/mL, ready for conjugation. Created using Proteintech's proprietary in-house recombinant technology. Recombinant production enables unrivalled batch-to-batch consistency, easy scale-up, and future security of supply.

This conjugation ready format makes antibodies ideal for use in many applications including: ELISAs, multiplex assays requiring matched pairs, mass cytometry, and multiplex imaging applications. Antibody use should be optimized by the end user for each application and assay.

Storage

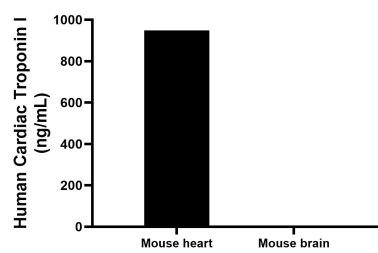
Storage:
Store at -80°C.

Storage Buffer:
PBS only, pH7.3

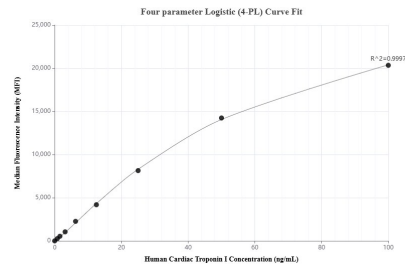
For technical support and original validation data for this product please contact:
T: 1 (888) 4PTGLAB (1-888-478-4522) (toll free in USA), or 1(312) 455-8498 (outside USA)
E: proteintech@ptglab.com
W: ptglab.com

This product is exclusively available under Proteintech Group brand and is not available to purchase from any other manufacturer.

Selected Validation Data



The mean Cardiac Troponin I concentration was determined to be 948.1 ng/mL in mouse heart tissue extract based on a 5.4 mg/mL extract load, mouse brain tissue extract were served as a negative control.



Cytometric bead array standard curve of MP03132-1, Cardiac Troponin I Recombinant Matched Antibody Pair, PBS Only. Capture antibody: 86791-3-PBS. Detection antibody: 86791-2-PBS. Standard: Ag16365. Range: 0.781-100 ng/mL