

For Research Use Only

AP3S2 Recombinant monoclonal antibody, PBS Only (Detector)

Catalog Number: 86795-1-PBS



Basic Information

Catalog Number: 86795-1-PBS	GenBank Accession Number: BC002785	Purification Method: Protein A purification
Size: 100ug, Concentration: 1 mg/ml by Nanodrop;	GeneID (NCBI): 10239	CloneNo.: 251741C11
Source: Rabbit	UNIPROT ID: P59780	
Isotype: IgG	Full Name: adaptor-related protein complex 3, sigma 2 subunit	
Immunogen Catalog Number: AG7565	Calculated MW: 22 kDa	
	Observed MW: 22 kDa	

Applications

Tested Applications:
WB, Sandwich ELISA, Indirect ELISA

Species Specificity:
human, mouse, rat

Product Information

86795-1-PBS targets AP3S2 as part of a matched antibody pair:

MP02806-1: 86795-2-PBS capture and 86795-1-PBS detection (validated in Sandwich ELISA)

Unconjugated rabbit recombinant monoclonal antibody in PBS only (BSA and azide free) storage buffer at a concentration of 1 mg/mL, ready for conjugation. Created using Proteintech's proprietary in-house recombinant technology. Recombinant production enables unrivalled batch-to-batch consistency, easy scale-up, and future security of supply.

This conjugation ready format makes antibodies ideal for use in many applications including: ELISAs, multiplex assays requiring matched pairs, mass cytometry, and multiplex imaging applications. Antibody use should be optimized by the end user for each application and assay.

Background Information

AP3S2 is a 22-kDa protein that belongs to the adaptor complexes small subunit family. AP3S2 is a subunit of the AP-3 complex which is associated with the Golgi region as well as more peripheral structures. Adaptor protein (AP) complexes are cytosolic heterotetramers that mediate the sorting of membrane proteins in the secretory and endocytic pathways. AP-3 complex is composed of two large adaptins (AP3D1 and AP3B1 or AP3B2), a medium adaptin (AP3M1 or AP3M2) and a small adaptin (APS1 or AP3S2).

Storage

Storage:
Store at -80°C.

Storage Buffer:
PBS only, pH7.3

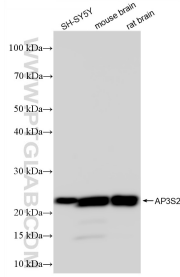
For technical support and original validation data for this product please contact:

T: 1 (888) 4PTGLAB (1-888-478-4522) (toll free in USA), or 1(312) 455-8498 (outside USA)

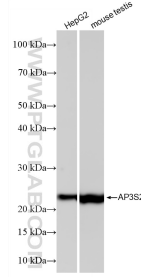
E: proteintech@ptglab.com
W: ptglab.com

This product is exclusively available under Proteintech Group brand and is not available to purchase from any other manufacturer.

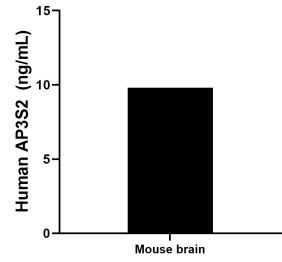
Selected Validation Data



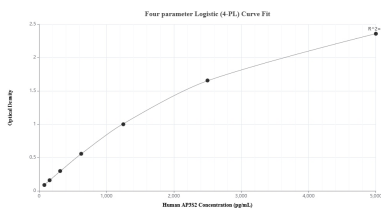
Various lysates were subjected to SDS PAGE followed by western blot with 86795-1-RR (AP3S2 antibody) at dilution of 1:10000 incubated at room temperature for 1.5 hours. This data was developed using the same antibody clone with 86795-1-PBS in a different storage buffer formulation.



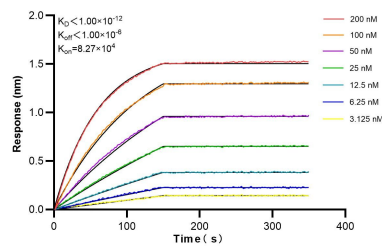
Various lysates were subjected to SDS PAGE followed by western blot with 86795-1-RR (AP3S2 antibody) at dilution of 1:10000 incubated at room temperature for 1.5 hours. This data was developed using the same antibody clone with 86795-1-PBS in a different storage buffer formulation.



The mean AP3S2 concentration was determined to be 9.81 ng/mL in mouse brain tissue extract based on a 2.2 mg/mL extract load.



Sandwich ELISA standard curve of MP02806-1, Human AP3S2 Recombinant Matched Antibody Pair - PBS only. 86795-2-PBS was coated to a plate as the capture antibody and incubated with serial dilutions of standard Ag7565. 86795-1-PBS was HRP conjugated as the detection antibody. Range: 78.1-5000 pg/mL.



Biolayer interferometry (BLI) kinetic assays of 86795-1-RR against Human AP3S2 were performed. The affinity constant is below 1 pM.