

For Research Use Only

SAMHD1 Recombinant monoclonal antibody, PBS Only

Catalog Number: 86798-1-PBS



Basic Information

Catalog Number: 86798-1-PBS	GenBank Accession Number: BC036450	Purification Method: Protein A purification
Size: 100ug, Concentration: 1 mg/ml by Nanodrop;	GeneID (NCBI): 25939	CloneNo.: 251815H5
Source: Rabbit	UNIPROT ID: Q9Y3Z3	
Isotype: IgG	Full Name: SAM domain and HD domain 1	
Immunogen Catalog Number: AG3287	Calculated MW: 626 aa, 72 kDa	
	Observed MW: 64-72 kDa	

Applications

Tested Applications:
WB, IF/ICC, Indirect ELISA

Species Specificity:
human

Background Information

SAMHD1, highly expressed by monocytes and monocyte-derived dendritic cells and by monocyte-derived macrophages at a lower extent, is reported as an HIV-1 restriction factor that inhibits the early step of the HIV-1 life cycle. Vpx (virus-like particles containing viral protein X) could overcome this block by interacting with SAMHD1, inducing proteasome-dependent degradation of SAMHD1. Mutations in SAMHD1 cause Aicardi-Goutières syndrome, a genetic encephalopathy with presumed immune pathogenesis. Three alternatively spliced transcripts encoding different isoforms have been described.

Storage

Storage:
Store at -80°C.

Storage Buffer:
PBS only, pH7.3

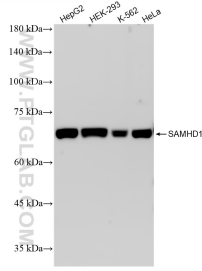
For technical support and original validation data for this product please contact:

T: 1 (888) 4PTGLAB (1-888-478-4522) (toll free in USA), or 1(312) 455-8498 (outside USA)

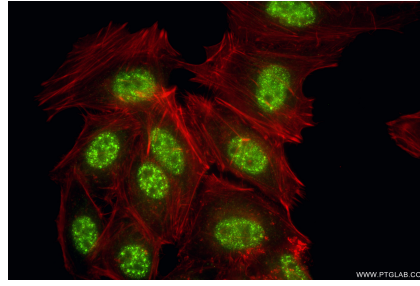
E: proteintech@ptglab.com
W: ptglab.com

This product is exclusively available under Proteintech Group brand and is not available to purchase from any other manufacturer.

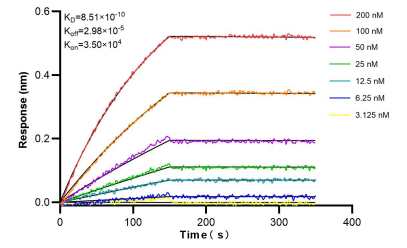
Selected Validation Data



Various lysates were subjected to SDS PAGE followed by western blot with 86798-1-RR (SAMHD1 antibody) at dilution of 1:10000 incubated at room temperature for 1.5 hours. This data was developed using the same antibody clone with 86798-1-PBS in a different storage buffer formulation.



Immunofluorescent analysis of (4% PFA) fixed HepG2 cells using SAMHD1 antibody (86798-1-RR, Clone: 251815H5) at dilution of 1:1000 and CoraLite® 488-Conjugated Goat Anti-Rabbit IgG(H+L) (SA00013-2), CL594-Phalloidin (red). This data was developed using the same antibody clone with 86798-1-PBS in a different storage buffer formulation.



Bioluminescence Interferometry (BLI) kinetic assays of 86798-1-RR against Human SAMHD1 were performed. The affinity constant is 0.851 nM.