

For Research Use Only

Rat Serpin A12 Recombinant monoclonal antibody, PBS Only (Capture)

Catalog Number: 86801-2-PBS



Basic Information

Catalog Number: 86801-2-PBS	GenBank Accession Number: GeneID (NCBI): 191570 UNIPROT ID: Q8R4Z1	Purification Method: Protein A purification
Size: 100ug , Concentration: 1 mg/ml by Nanodrop;	Full Name: serine (or cysteine) peptidase inhibitor, clade A (alpha-1 anti-proteinase, antitrypsin), member 12	CloneNo.: 251279E11
Source: Rabbit	Calculated MW: 48 kDa	
Isotype: IgG		
Immunogen Catalog Number: EG3407		

Applications

Tested Applications:
Sandwich ELISA, Indirect ELISA

Species Specificity:
rat

Product Information

86801-2-PBS targets Serpin A12 as part of a matched antibody pair:

MP02832-1: 86801-2-PBS capture and 86801-1-PBS detection (validated in Sandwich ELISA)

Unconjugated rabbit recombinant monoclonal antibody in PBS only (BSA and azide free) storage buffer at a concentration of 1 mg/mL, ready for conjugation. Created using Proteintech's proprietary in-house recombinant technology. Recombinant production enables unrivalled batch-to-batch consistency, easy scale-up, and future security of supply.

This conjugation ready format makes antibodies ideal for use in many applications including: ELISAs, multiplex assays requiring matched pairs, mass cytometry, and multiplex imaging applications. Antibody use should be optimized by the end user for each application and assay.

Storage

Storage:
Store at -80°C.

Storage Buffer:
PBS only, pH7.3

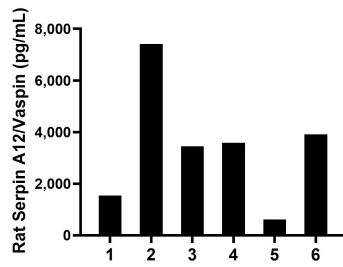
For technical support and original validation data for this product please contact:

T: 1 (888) 4PTGLAB (1-888-478-4522) (toll free in USA), or 1(312) 455-8498 (outside USA)

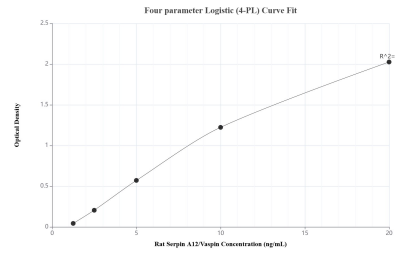
E: proteintech@ptglab.com
W: ptglab.com

This product is exclusively available under Proteintech Group brand and is not available to purchase from any other manufacturer.

Selected Validation Data



Serum of eight rats was measured. The Serpin A12/Vaspin concentration of detected samples was determined to be 3,420.9 pg/mL with a range of 618.2-7,418.0 pg/mL.



Sandwich ELISA standard curve of MP02832-1, Rat Serpin A12/Vaspin Recombinant Matched Antibody Pair - PBS only. 86801-2-PBS was coated to a plate as the capture antibody and incubated with serial dilutions of standard Eg3407. 86801-1-PBS was HRP conjugated as the detection antibody. Range: 1.25-20 ng/mL.