

For Research Use Only

MPZL3 Recombinant monoclonal antibody

Catalog Number: 86803-1-RR



Basic Information

Catalog Number: 86803-1-RR	GenBank Accession Number: NM_001093749.2	Purification Method: Protein A purification
Size: 100ul , Concentration: 1000 µg/ml by Nanodrop;	GeneID (NCBI): 319742	CloneNo.: 251621F6
Source: Rabbit	UNIPROT ID: Q3V3F6-1	Recommended Dilutions: WB: 1:5000-1:50000
Isotype: IgG	Full Name: myelin protein zero-like 3	
Immunogen Catalog Number: EG6821	Calculated MW: 26 kDa	
	Observed MW: 70 kDa, 28 kDa	

Applications

Tested Applications: WB, ELISA	Positive Controls: WB : mouse liver tissue, rat liver tissue, mouse testis tissue
Species Specificity: mouse, rat	

Background Information

MPZL3(Myelin Protein Zero Like 3) is a transmembrane protein belonging to the myelin protein zero (MPZ) gene family. It acts upstream of or within extracellular matrix organization and hair cycle. Predicted to be located in membrane. Predicted to be active in plasma membrane. Human ortholog(s) of this gene implicated in lung cancer. Orthologous to human MPZL3 (myelin protein zero like 3).

Storage

Storage:
Store at -20°C. Stable for one year after shipment.
Storage Buffer:
PBS with 0.02% sodium azide and 50% glycerol, pH7.3
Aliquoting is unnecessary for -20°C storage

*** 20ul sizes contain 0.1% BSA

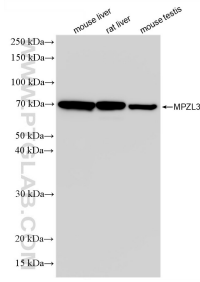
For technical support and original validation data for this product please contact:

T: 1 (888) 4PTGLAB (1-888-478-4522) (toll free in USA), or 1(312) 455-8498 (outside USA)

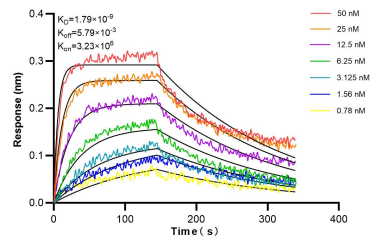
E: proteintech@ptglab.com
W: ptglab.com

This product is exclusively available under Proteintech Group brand and is not available to purchase from any other manufacturer.

Selected Validation Data



Various lysates were subjected to SDS PAGE followed by western blot with 86803-1-RR (MPZL3 antibody) at dilution of 1:10000 incubated at room temperature for 1.5 hours.



Biolayer interferometry (BLI) kinetic assays of 86803-1-RR against Mouse MPZL3 were performed. The affinity constant is 1.79 nM.