

For Research Use Only

iPLA2 Recombinant monoclonal antibody, PBS Only

Catalog Number: 86812-1-PBS



Basic Information

Catalog Number: 86812-1-PBS	GenBank Accession Number: BC036742	Purification Method: Protein A purification
Size: 100ug , Concentration: 1 mg/ml by Nanodrop;	GeneID (NCBI): 8398	CloneNo.: 251854E4
Source: Rabbit	UNIPROT ID: O60733	
Isotype: IgG	Full Name: phospholipase A2, group VI (cytosolic, calcium-independent)	
Immunogen Catalog Number: AG36873	Calculated MW: 90 kDa	
	Observed MW: 85-90 kDa	

Applications

Tested Applications:
WB, Indirect ELISA

Species Specificity:
human, mouse, rat

Background Information

PLA2G6, also named as PLPLA9, iPLA2, is involved in the remodeling of membranes allowing arachidonic acid to be placed in the proper position in phospholipids for stimulated release. It has been implicated in normal phospholipid remodeling, nitric oxide-induced or vasopressin-induced arachidonic acid release and in leukotriene and prostaglandin production.

Storage

Storage:
Store at -80°C.
Storage Buffer:
PBS only, pH7.3

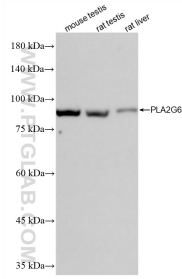
For technical support and original validation data for this product please contact:

T: 1 (888) 4PTGLAB (1-888-478-4522) (toll free in USA), or 1(312) 455-8498 (outside USA)

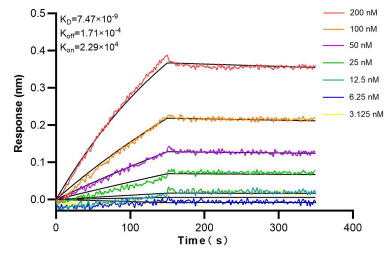
E: proteintech@ptglab.com
W: ptglab.com

This product is exclusively available under Proteintech Group brand and is not available to purchase from any other manufacturer.

Selected Validation Data



Various lysates were subjected to SDS PAGE followed by western blot with 86812-1-RR (iPLA2 antibody) at dilution of 1:3000 incubated at room temperature for 1.5 hours. This data was developed using the same antibody clone with 86812-1-PBS in a different storage buffer formulation.



Biolayer interferometry (BLI) kinetic assays of 86812-1-RR against Human iPLA2 were performed. The affinity constant is 7.47 nM.