

For Research Use Only

iPLA2 Recombinant monoclonal antibody

Catalog Number: 86812-1-RR



Basic Information

Catalog Number: 86812-1-RR	GenBank Accession Number: BC036742	Purification Method: Protein A purification
Size: 100ul , Concentration: 1000 µg/ml by Nanodrop;	GeneID (NCBI): 8398	CloneNo.: 251854E4
Source: Rabbit	UNIPROT ID: O60733	Recommended Dilutions: WB: 1:1000-1:6000
Isotype: IgG	Full Name: phospholipase A2, group VI (cytosolic, calcium-independent)	
Immunogen Catalog Number: AG36873	Calculated MW: 90 kDa	
	Observed MW: 85-90 kDa	

Applications

Tested Applications: WB, ELISA	Positive Controls:
Species Specificity: human, mouse, rat	WB : mouse testis tissue, rat testis tissue, rat liver tissue

Background Information

PLA2G6, also named as PLPLA9, iPLA2, is involved in the remodeling of membranes allowing arachidonic acid to be placed in the proper position in phospholipids for stimulated release. It has been implicated in normal phospholipid remodeling, nitric oxide-induced or vasopressin-induced arachidonic acid release and in leukotriene and prostaglandin production.

Storage

Storage:
Store at -20°C. Stable for one year after shipment.
Storage Buffer:
PBS with 0.02% sodium azide and 50% glycerol, pH7.3
Aliquoting is unnecessary for -20°C storage

*** 20ul sizes contain 0.1% BSA

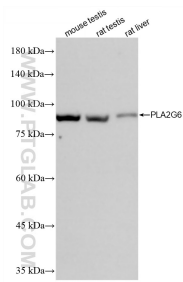
For technical support and original validation data for this product please contact:

T: 1 (888) 4PTGLAB (1-888-478-4522) (toll free in USA), or 1(312) 455-8498 (outside USA)

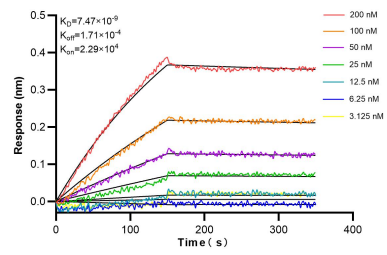
E: proteintech@ptglab.com
W: ptglab.com

This product is exclusively available under Proteintech Group brand and is not available to purchase from any other manufacturer.

Selected Validation Data



Various lysates were subjected to SDS PAGE followed by western blot with 86812-1-RR (iPLA2 antibody) at dilution of 1:3000 incubated at room temperature for 1.5 hours.



Biolayer interferometry (BLI) kinetic assays of 86812-1-RR against Human iPLA2 were performed. The affinity constant is 7.47 nM.