

For Research Use Only

HAT1 Recombinant monoclonal antibody, PBS Only

Catalog Number: 86815-1-PBS



Basic Information

Catalog Number: 86815-1-PBS	GenBank Accession Number: BC018682	Purification Method: Protein A purification
Size: 100ug, Concentration: 1 mg/ml by Nanodrop;	GeneID (NCBI): 8520	CloneNo.: 251855A12
Source: Rabbit	UNIPROT ID: O14929	
Isotype: IgG	Full Name: histone acetyltransferase 1	
Immunogen Catalog Number: AG1952	Calculated MW: 419 aa, 50 kDa	
	Observed MW: 46 kDa	

Applications

Tested Applications:
WB, IF/ICC, Indirect ELISA

Species Specificity:
human

Storage

Storage:
Store at -80°C.

Storage Buffer:
PBS only, pH7.3

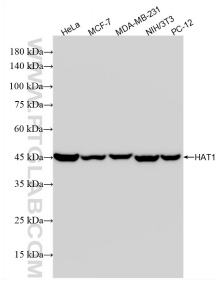
For technical support and original validation data for this product please contact:

T: 1 (888) 4PTGLAB (1-888-478-4522) (toll free in USA), or 1(312) 455-8498 (outside USA)

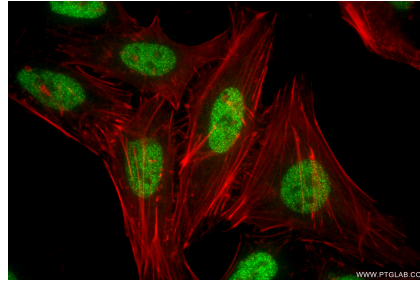
E: proteintech@ptglab.com
W: ptglab.com

This product is exclusively available under Proteintech Group brand and is not available to purchase from any other manufacturer.

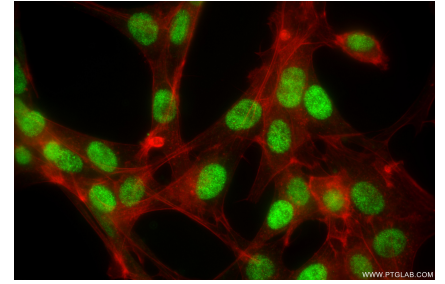
Selected Validation Data



Various lysates were subjected to SDS PAGE followed by western blot with 86815-1-RR (HAT1 antibody) at dilution of 1:10000 incubated at room temperature for 1.5 hours. This data was developed using the same antibody clone with 86815-1-PBS in a different storage buffer formulation.



Immunofluorescent analysis of (4% PFA) fixed HeLa cells using HAT1 antibody (86815-1-RR, Clone: 251855A12) at dilution of 1:800 and CoraLite®488-Conjugated Goat Anti-Rabbit IgG(H+L) (SA00013-2), CL594-Phalloidin (red). This data was developed using the same antibody clone with 86815-1-PBS in a different storage buffer formulation.



Immunofluorescent analysis of (4% PFA) fixed NIH/3T3 cells using HAT1 antibody (86815-1-RR, Clone: 251855A12) at dilution of 1:800 and CoraLite®488-Conjugated Goat Anti-Rabbit IgG(H+L) (SA00013-2), CL594-Phalloidin (red). This data was developed using the same antibody clone with 86815-1-PBS in a different storage buffer formulation.