

For Research Use Only

# HAT1 Recombinant monoclonal antibody

Catalog Number: 86815-1-RR



## Basic Information

<b>Catalog Number:</b> 86815-1-RR	<b>GenBank Accession Number:</b> BC018682	<b>Purification Method:</b> Protein A purification
<b>Size:</b> 100ul , Concentration: 1000 µg/ml by Nanodrop;	<b>GeneID (NCBI):</b> 8520	<b>CloneNo.:</b> 251855A12
<b>Source:</b> Rabbit	<b>UNIPROT ID:</b> O14929	<b>Recommended Dilutions:</b> WB: 1:5000-1:50000 IF/ICC: 1:400-1:1600
<b>Isotype:</b> IgG	<b>Full Name:</b> histone acetyltransferase 1	
<b>Immunogen Catalog Number:</b> AG1952	<b>Calculated MW:</b> 419 aa, 50 kDa	
	<b>Observed MW:</b> 46 kDa	

## Applications

<b>Tested Applications:</b> WB, IF/ICC, ELISA	<b>Positive Controls:</b>
<b>Species Specificity:</b> human	<b>WB :</b> HeLa cells, MCF-7 cells, MDA-MB-231 cells, NIH/3T3 cells, PC-12 cells
	<b>IF/ICC :</b> HeLa cells, NIH/3T3 cells

## Storage

**Storage:**  
Store at -20°C. Stable for one year after shipment.  
**Storage Buffer:**  
PBS with 0.02% sodium azide and 50% glycerol, pH7.3  
Aliquoting is unnecessary for -20°C storage

**\*\*\* 20ul sizes contain 0.1% BSA**

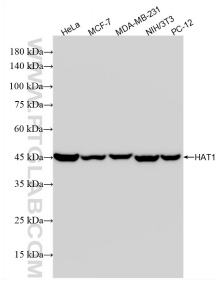
For technical support and original validation data for this product please contact:

T: 1 (888) 4PTGLAB (1-888-478-4522) (toll free in USA), or 1(312) 455-8498 (outside USA)

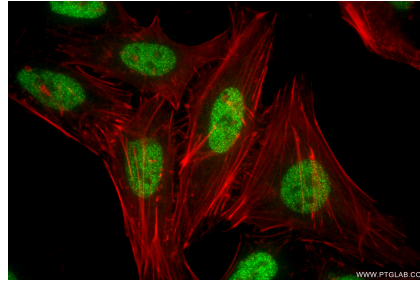
E: [proteintech@ptglab.com](mailto:proteintech@ptglab.com)  
W: [ptglab.com](http://ptglab.com)

**This product is exclusively available under Proteintech Group brand and is not available to purchase from any other manufacturer.**

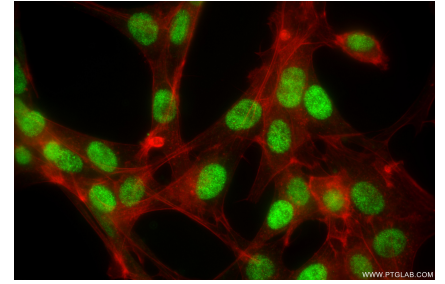
## Selected Validation Data



Various lysates were subjected to SDS PAGE followed by western blot with 86815-1-RR (HAT1 antibody) at dilution of 1:10000 incubated at room temperature for 1.5 hours.



Immunofluorescent analysis of (4% PFA) fixed HeLa cells using HAT1 antibody (86815-1-RR, Clone: 251855A12 ) at dilution of 1:800 and CoraLite® 488-Conjugated Goat Anti-Rabbit IgG(H+L) (SA00013-2), CL594-Phalloidin (red).



Immunofluorescent analysis of (4% PFA) fixed NIH/3T3 cells using HAT1 antibody (86815-1-RR, Clone: 251855A12 ) at dilution of 1:800 and CoraLite® 488-Conjugated Goat Anti-Rabbit IgG(H+L) (SA00013-2), CL594-Phalloidin (red).