

For Research Use Only

ACP1 Recombinant monoclonal antibody, PBS Only

Catalog Number: 86817-1-PBS



Basic Information

Catalog Number:

86817-1-PBS

Size:

100ug, Concentration: 1 mg/ml by Nanodrop;

Source:

Rabbit

Isotype:

IgG

Immunogen Catalog Number:

AG17539

GenBank Accession Number:

BC007422

GeneID (NCBI):

52

UNIPROT ID:

P24666

Full Name:

acid phosphatase 1, soluble

Calculated MW:

158 aa, 18 kDa

Observed MW:

18 kDa

Purification Method:

Protein A purification

CloneNo.:

251838C3

Applications

Tested Applications:

WB, IF/ICC, Indirect ELISA

Species Specificity:

human, mouse, rat

Background Information

Acid phosphatase 1 (ACP1) is a low-molecular-weight phosphotyrosine protein phosphatase known to participate in various cellular processes, including signal transduction, proliferation, and metabolism. It functions by dephosphorylating tyrosine-phosphorylated proteins, thereby modulating receptor-mediated signaling pathways.

Storage

Storage:

Store at -80°C.

Storage Buffer:

PBS only, pH7.3

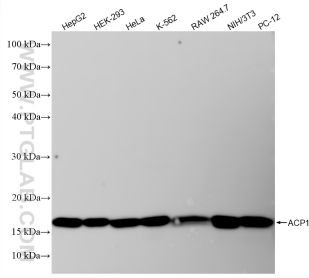
For technical support and original validation data for this product please contact:

T: 1 (888) 4PTGLAB (1-888-478-4522) (toll free in USA), or 1(312) 455-8498 (outside USA)

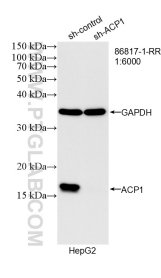
E: proteintech@ptglab.com
W: ptglab.com

This product is exclusively available under Proteintech Group brand and is not available to purchase from any other manufacturer.

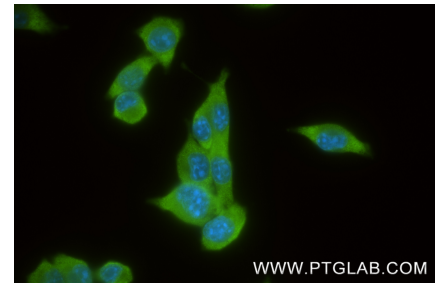
Selected Validation Data



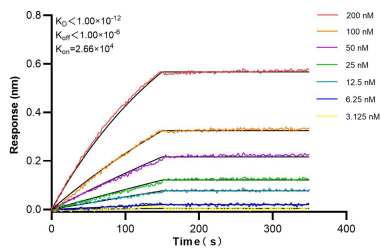
Various lysates were subjected to SDS PAGE followed by western blot with 86817-1-RR (ACP1 antibody) at dilution of 1:10000 incubated at room temperature for 1.5 hours. This data was developed using the same antibody clone with 86817-1-PBS in a different storage buffer formulation.



WB result of ACP1 antibody (86817-1-RR; 1:6000; incubated at room temperature for 1.5 hours) with sh-Control and sh-ACP1 transfected HepG2 cells. This data was developed using the same antibody clone with 86817-1-PBS in a different storage buffer formulation.



Immunofluorescent analysis of (4% PFA) fixed 4T1 cells using ACP1 antibody (86817-1-RR, Clone: 251838C3) at dilution of 1:400 and CoraLite@488-Conjugated Goat Anti-Rabbit IgG(H+L) (SA00013-2). This data was developed using the same antibody clone with 86817-1-PBS in a different storage buffer formulation.



Biolayer interferometry (BLI) kinetic assays of 86817-1-RR against Human ACP1 were performed. The affinity constant is below 1 pM.