

For Research Use Only

# ACP1 Recombinant monoclonal antibody

Catalog Number: 86817-1-RR



## Basic Information

<b>Catalog Number:</b> 86817-1-RR	<b>GenBank Accession Number:</b> BC007422	<b>Purification Method:</b> Protein A purification
<b>Size:</b> 100ul , Concentration: 1000 µg/ml by 52 Nanodrop;	<b>GeneID (NCBI):</b> 52	<b>CloneNo.:</b> 251838C3
<b>Source:</b> Rabbit	<b>UNIPROT ID:</b> P24666	<b>Recommended Dilutions:</b> WB: 1:5000-1:50000 IF/ICC: 1:200-1:800
<b>Isotype:</b> IgG	<b>Full Name:</b> acid phosphatase 1, soluble	
<b>Immunogen Catalog Number:</b> AG17539	<b>Calculated MW:</b> 158 aa, 18 kDa	
	<b>Observed MW:</b> 18 kDa	

## Applications

<b>Tested Applications:</b> WB, IF/ICC, ELISA	<b>Positive Controls:</b>
<b>Species Specificity:</b> human, mouse, rat	<b>WB :</b> HepG2 cells, HEK-293 cells, HeLa cells, K-562 cells, RAW 264.7 cells, NIH/3T3 cells, PC-12 cells <b>IF/ICC :</b> 4T1 cells,

## Background Information

Acid phosphatase 1 (ACP1) is a low-molecular-weight phosphotyrosine protein phosphatase known to participate in various cellular processes, including signal transduction, proliferation, and metabolism. It functions by dephosphorylating tyrosine-phosphorylated proteins, thereby modulating receptor-mediated signaling pathways.

## Storage

**Storage:**  
Store at -20°C. Stable for one year after shipment.  
**Storage Buffer:**  
PBS with 0.02% sodium azide and 50% glycerol, pH7.3  
**Aliquoting is unnecessary for -20°C storage**

\*\*\* 20ul sizes contain 0.1% BSA

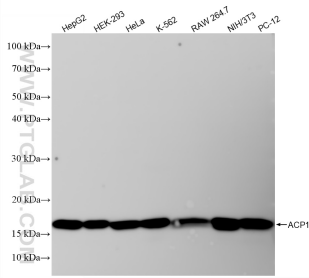
For technical support and original validation data for this product please contact:

T: 1 (888) 4PTGLAB (1-888-478-4522) (toll free in USA), or 1(312) 455-8498 (outside USA)

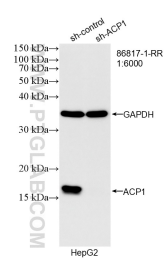
E: [proteintech@ptglab.com](mailto:proteintech@ptglab.com)  
W: [ptglab.com](http://ptglab.com)

This product is exclusively available under Proteintech Group brand and is not available to purchase from any other manufacturer.

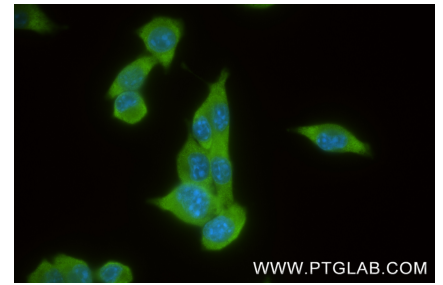
## Selected Validation Data



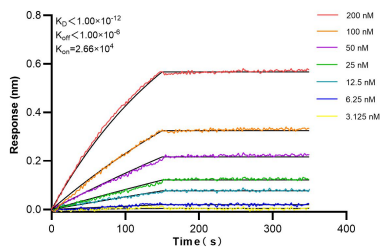
Various lysates were subjected to SDS PAGE followed by western blot with 86817-1-RR (ACP1 antibody) at dilution of 1:10000 incubated at room temperature for 1.5 hours.



WB result of ACP1 antibody (86817-1-RR; 1:6000; incubated at room temperature for 1.5 hours) with sh-Control and sh-ACP1 transfected HepG2 cells.



Immunofluorescent analysis of (4% PFA) fixed 4T1 cells using ACP1 antibody (86817-1-RR, Clone: 251838C3 ) at dilution of 1:400 and CoraLite@488-Conjugated Goat Anti-Rabbit IgG(H+L) (SA00013-2).



Biolayer interferometry (BLI) kinetic assays of 86817-1-RR against Human ACP1 were performed. The affinity constant is below 1 pM.