

For Research Use Only

# COX6C Recombinant monoclonal antibody, PBS Only (Capture)

Catalog Number: 86818-2-PBS



## Basic Information

<b>Catalog Number:</b> 86818-2-PBS	<b>GenBank Accession Number:</b> BC000187	<b>Purification Method:</b> Protein A purification
<b>Size:</b> 100ug, Concentration: 1 mg/ml by Nanodrop;	<b>GeneID (NCBI):</b> 1345	<b>CloneNo.:</b> 251865D9
<b>Source:</b> Rabbit	<b>UNIPROT ID:</b> P09669	
<b>Isotype:</b> IgG	<b>Full Name:</b> cytochrome c oxidase subunit VIc	
<b>Immunogen Catalog Number:</b> AG1982	<b>Calculated MW:</b> 75 aa, 9 kDa	
	<b>Observed MW:</b> 9 kDa	

## Applications

**Tested Applications:**  
WB, Cytometric bead array, Indirect ELISA

**Species Specificity:**  
human, mouse, rat

## Product Information

86818-2-PBS targets COX6C as part of a matched antibody pair:

MP02689-1: 86818-2-PBS capture and 86818-1-PBS detection (validated in Cytometric bead array)

Unconjugated rabbit recombinant monoclonal antibody in PBS only (BSA and azide free) storage buffer at a concentration of 1 mg/mL, ready for conjugation. Created using Proteintech's proprietary in-house recombinant technology. Recombinant production enables unrivalled batch-to-batch consistency, easy scale-up, and future security of supply.

This conjugation ready format makes antibodies ideal for use in many applications including: ELISAs, multiplex assays requiring matched pairs, mass cytometry, and multiplex imaging applications. Antibody use should be optimized by the end user for each application and assay.

## Background Information

Cytochrome c oxidase (COX) is the terminal oxidase in the respiratory chain in human and other mammalian cells. The enzyme is composed of 13 different subunits. COX6C (Cytochrome c oxidase subunit 6C) is one of the nuclear-coded polypeptide chains of cytochrome c oxidase, the terminal oxidase in mitochondrial electron transport.

## Storage

**Storage:**  
Store at -80°C.

**Storage Buffer:**  
PBS only, pH7.3

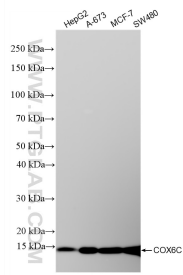
For technical support and original validation data for this product please contact:

T: 1 (888) 4PTGLAB (1-888-478-4522) (toll free in USA), or 1(312) 455-8498 (outside USA)

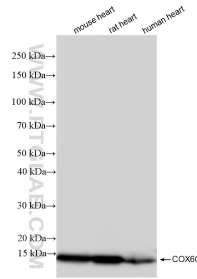
E: [proteintech@ptglab.com](mailto:proteintech@ptglab.com)  
W: [ptglab.com](http://ptglab.com)

**This product is exclusively available under Proteintech Group brand and is not available to purchase from any other manufacturer.**

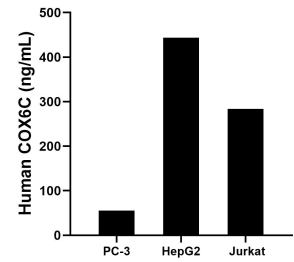
## Selected Validation Data



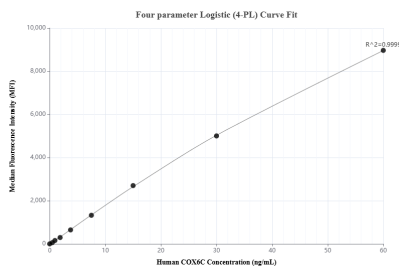
Various lysates were subjected to SDS PAGE followed by western blot with 86818-2-RR (COX6C antibody) at dilution of 1:20000 incubated at room temperature for 1.5 hours. This data was developed using the same antibody clone with 86818-2-PBS in a different storage buffer formulation.



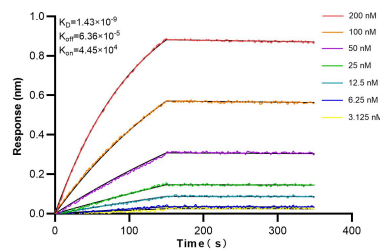
Various lysates were subjected to SDS PAGE followed by western blot with 86818-2-RR (COX6C antibody) at dilution of 1:20000 incubated at room temperature for 1.5 hours. This data was developed using the same antibody clone with 86818-2-PBS in a different storage buffer formulation.



The mean COX6C concentration was determined to be 55.7 ng/mL in PC-3 cell extract based on a 1.1 mg/mL extract load, 443.5 ng/mL in HepG2 cell extract based on a 1.2 mg/mL extract load, 283.8 ng/mL in Jurkat cell extract based on a 1.2 mg/mL extract load.



Cytometric bead array standard curve of MPO2689-1, COX6C Recombinant Matched Antibody Pair, PBS Only. Capture antibody: 86818-2-PBS. Detection antibody: 86818-1-PBS. Standard: Ag1982. Range: 0.469-60 ng/mL



Biolayer interferometry (BLI) kinetic assays of 86818-2-RR against Human COX6C were performed. The affinity constant is 1.43 nM.