

For Research Use Only

# ENSA Recombinant monoclonal antibody, PBS Only

Catalog Number:86820-1-PBS



## Basic Information

Catalog Number:

86820-1-PBS

Size:

100ug , Concentration: 1 mg/ml by Nanodrop;

Source:

Rabbit

Isotype:

IgG

Immunogen Catalog Number:

AG14484

GenBank Accession Number:

BC004461

GeneID (NCBI):

2029

UNIPROT ID:

O43768

Full Name:

endosulfine alpha

Calculated MW:

14 kDa

Observed MW:

15-19 kDa

Purification Method:

Protein A purification

CloneNo.:

251820D6

## Applications

Tested Applications:

WB, IF/ICC, Indirect ELISA

Species Specificity:

human

## Storage

Storage:

Store at -80°C.

Storage Buffer:

PBS only, pH7.3

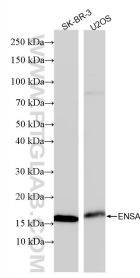
For technical support and original validation data for this product please contact:

T: 1 (888) 4PTGLAB (1-888-478-4522) (toll free in USA), or 1(312) 455-8498 (outside USA)

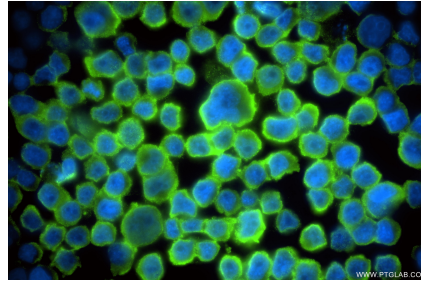
E: [proteintech@ptglab.com](mailto:proteintech@ptglab.com)  
W: [ptglab.com](http://ptglab.com)

This product is exclusively available under Proteintech Group brand and is not available to purchase from any other manufacturer.

## Selected Validation Data



Various lysates were subjected to SDS PAGE followed by western blot with 86820-1-RR (ENSA antibody) at dilution of 1:5000 incubated at room temperature for 1.5 hours. This data was developed using the same antibody clone with 86820-1-PBS in a different storage buffer formulation.



Immunofluorescent analysis of (4% PFA) fixed COLO 320 cells using ENSA antibody (86820-1-RR, Clone: 251820D6) at dilution of 1:400 and CoraLite® 488-Conjugated Goat Anti-Rabbit IgG(H+L) (SA00013-2). This data was developed using the same antibody clone with 86820-1-PBS in a different storage buffer formulation.