

For Research Use Only

ENSA Recombinant monoclonal antibody

Catalog Number: 86820-1-RR



Basic Information

Catalog Number: 86820-1-RR	GenBank Accession Number: BC004461	Purification Method: Protein A purification
Size: 100ul , Concentration: 1000 µg/ml by Nanodrop;	GeneID (NCBI): 2029	CloneNo.: 251820D6
Source: Rabbit	UNIPROT ID: O43768	Recommended Dilutions: WB: 1:2000-1:10000 IF/ICC: 1:200-1:800
Isotype: IgG	Full Name: endosulfine alpha	
Immunogen Catalog Number: AG14484	Calculated MW: 14 kDa	
	Observed MW: 15-19 kDa	

Applications

Tested Applications: WB, IF/ICC, ELISA	Positive Controls: WB : SK-BR-3 cells, U2OS cells IF/ICC : COLO 320 cells,
Species Specificity: human	

Storage

Storage:
Store at -20°C. Stable for one year after shipment.
Storage Buffer:
PBS with 0.02% sodium azide and 50% glycerol, pH7.3
Aliquoting is unnecessary for -20°C storage

***** 20ul sizes contain 0.1% BSA**

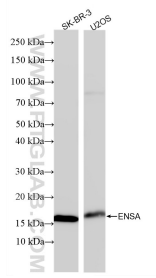
For technical support and original validation data for this product please contact:

T: 1 (888) 4PTGLAB (1-888-478-4522) (toll free in USA), or 1(312) 455-8498 (outside USA)

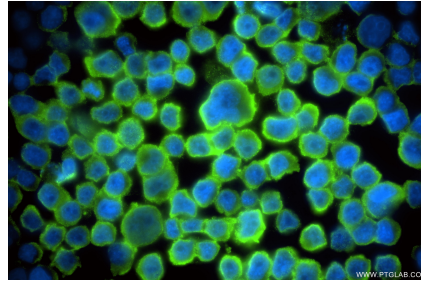
E: proteintech@ptglab.com
W: ptglab.com

This product is exclusively available under Proteintech Group brand and is not available to purchase from any other manufacturer.

Selected Validation Data



Various lysates were subjected to SDS PAGE followed by western blot with 86820-1-RR (ENSA antibody) at dilution of 1:5000 incubated at room temperature for 1.5 hours.



Immunofluorescent analysis of (4% PFA) fixed COLO 320 cells using ENSA antibody (86820-1-RR, Clone: 251820D6) at dilution of 1:400 and CoraLite® 488-Conjugated Goat Anti-Rabbit IgG(H+L) (SA00013-2).