

For Research Use Only

# IGF-II R/IGF2R Recombinant monoclonal antibody

Catalog Number: 86821-1-RR



## Basic Information

<b>Catalog Number:</b> 86821-1-RR	<b>GenBank Accession Number:</b> NM_000876.4	<b>Purification Method:</b> Protein A purification
<b>Size:</b> 100ul , Concentration: 1000 µg/ml by Nanodrop;	<b>GeneID (NCBI):</b> 3482	<b>CloneNo.:</b> 251265D1
<b>Source:</b> Rabbit	<b>UNIPROT ID:</b> P11717	<b>Recommended Dilutions:</b> WB: 1:500-1:2000 IF/ICC: 1:250-1:1000
<b>Isotype:</b> IgG	<b>Full Name:</b> insulin-like growth factor 2 receptor	
<b>Immunogen Catalog Number:</b> EG3488	<b>Calculated MW:</b> 274 kDa	
	<b>Observed MW:</b> 300 kDa	

## Applications

<b>Tested Applications:</b> WB, IF/ICC, ELISA	<b>Positive Controls:</b> WB : HepG2 cells, Jurkat cells, HEK-293 cells
<b>Species Specificity:</b> human	<b>IF/ICC :</b> HepG2 cells,

## Background Information

IGF2R, also named as MPRI, CI Man-6-P receptor, CI-MPR, M6PR, IGF-II receptor, M6P/IGF2R, MPR 300 and CD222, belongs to the MRL1/IGF2R family. IGF2R transports of phosphorylated lysosomal enzymes from the Golgi complex and the cell surface to lysosomes. IGF2R is a lysosomal enzymes bearing phosphomannosyl residues bind specifically to mannose-6-phosphate receptors in the Golgi apparatus and the resulting receptor-ligand complex is transported to an acidic prelysosomal compartment where the low pH mediates the dissociation of the complex. This receptor also binds IGF2. IGF2R acts as a positive regulator of T-cell coactivation, by binding DPP4.

## Storage

**Storage:**  
Store at -20°C. Stable for one year after shipment.  
**Storage Buffer:**  
PBS with 0.02% sodium azide and 50% glycerol, pH7.3  
Aliquoting is unnecessary for -20°C storage

\*\*\* 20ul sizes contain 0.1% BSA

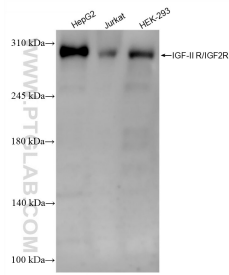
For technical support and original validation data for this product please contact:

T: 1 (888) 4PTGLAB (1-888-478-4522) (toll free in USA), or 1(312) 455-8498 (outside USA)

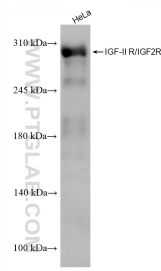
E: proteintech@ptglab.com  
W: ptglab.com

This product is exclusively available under Proteintech Group brand and is not available to purchase from any other manufacturer.

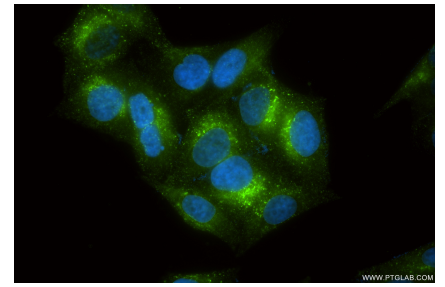
## Selected Validation Data



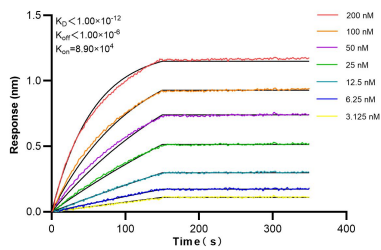
Various lysates were subjected to SDS PAGE followed by western blot with 86821-1-RR (IGF-II R/IGF2R antibody) at dilution of 1:1000 incubated at room temperature for 1.5 hours.



HeLa cells were subjected to SDS PAGE followed by western blot with 86821-1-RR (IGF-II R/IGF2R antibody) at dilution of 1:1000 incubated at room temperature for 1.5 hours.



Immunofluorescent analysis of (4% PFA) fixed HepG2 cells using IGF-II R/IGF2R antibody (86821-1-RR, Clone: 251265D1) at dilution of 1:500 and CoraLite®488-Conjugated Goat Anti-Rabbit IgG(H+L) (SA00013-2).



Biolayer interferometry (BLI) kinetic assays of 86821-1-RR against Human IGF-II R/IGF2R were performed. The affinity constant is below 1 pM.