

For Research Use Only

IGF-II R/IGF2R Recombinant monoclonal antibody, PBS Only (Capture)

Catalog Number:86821-3-PBS



Basic Information

Catalog Number: 86821-3-PBS	GenBank Accession Number: NM_000876.4	Purification Method: Protein A purification
Size: 100ug , Concentration: 1 mg/ml by Nanodrop;	GeneID (NCBI): 3482	CloneNo.: 251265C10
Source: Rabbit	UNIPROT ID: P11717	
Isotype: IgG	Full Name: insulin-like growth factor 2 receptor	
Immunogen Catalog Number: EG3488	Calculated MW: 274 kDa	

Applications

Tested Applications:
Cytometric bead array, Sandwich ELISA, Indirect ELISA

Species Specificity:
human

Product Information

86821-3-PBS targets IGF-II R/IGF2R as part of a matched antibody pair:

MP02694-1: 86821-3-PBS capture and 86821-2-PBS detection (validated in Cytometric bead array)

MP02694-2: 86821-3-PBS capture and 86821-4-PBS detection (validated in Sandwich ELISA)

Unconjugated rabbit recombinant monoclonal antibody in PBS only (BSA and azide free) storage buffer at a concentration of 1 mg/mL, ready for conjugation. Created using Proteintech's proprietary in-house recombinant technology. Recombinant production enables unrivalled batch-to-batch consistency, easy scale-up, and future security of supply.

This conjugation ready format makes antibodies ideal for use in many applications including: ELISAs, multiplex assays requiring matched pairs, mass cytometry, and multiplex imaging applications. Antibody use should be optimized by the end user for each application and assay.

Storage

Storage:
Store at -80°C.
Storage Buffer:
PBS only, pH7.3

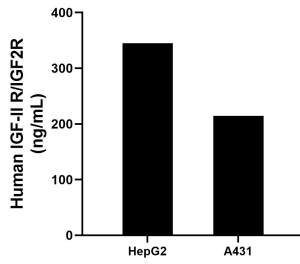
For technical support and original validation data for this product please contact:

T: 1 (888) 4PTGLAB (1-888-478-4522) (toll free in USA), or 1(312) 455-8498 (outside USA)

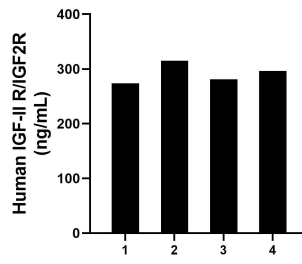
E: proteintech@ptglab.com
W: ptglab.com

This product is exclusively available under Proteintech Group brand and is not available to purchase from any other manufacturer.

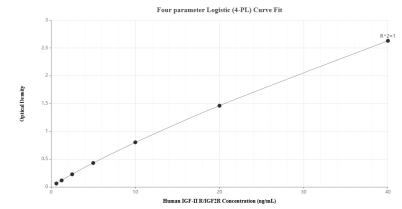
Selected Validation Data



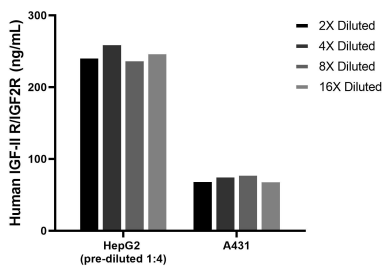
The mean IGF-II R/IGF2R concentration was determined to be 344.83 ng/mL in HepG2 cell extract based on a 1.2 mg/mL extract load and 214.23 ng/mL in A431 cell extract based on a 1.2 mg/mL extract load.



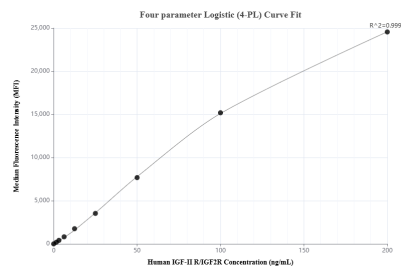
Serum of four individual healthy human donors was measured. The human IGF-II R/IGF2R concentration of detected samples was determined to be 291.46 ng/mL with a range of 273.79 - 315.06 ng/mL.



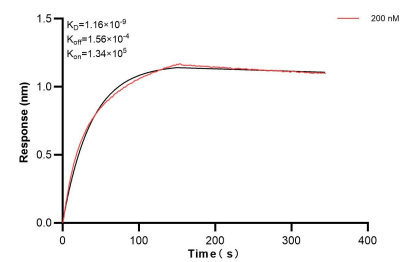
Sandwich ELISA standard curve of MP02694-2, Human IGF-II R/IGF2R Recombinant Matched Antibody Pair - PBS only. 86821-3-PBS was coated to a plate as the capture antibody and incubated with serial dilutions of standard Eg3488. 86821-4-PBS was HRP conjugated as the detection antibody. Range: 0.625-40 ng/mL



The mean IGF-II R/IGF2R concentration was determined to be 248.2 ng/mL in HepG2 cell extract based on a 1.2 mg/mL extract load, 74.7 ng/mL in A431 cell extract based on a 1.2 mg/mL extract load.



Cytometric bead array standard curve of MP02694-1, IGF-II R/IGF2R Recombinant Matched Antibody Pair, PBS Only. Capture antibody: 86821-3-PBS. Detection antibody: 86821-2-PBS. Standard: Eg3488. Range: 1.562-200 ng/mL



Bi-layer interferometry (BLI) kinetic assays of 86821-3-PBS against Human IGF-II R/IGF2R were performed. The affinity constant is 1.16 nM.