

For Research Use Only

# ZFC3H1 Recombinant monoclonal antibody, PBS Only

Catalog Number: 86822-1-PBS



## Basic Information

<b>Catalog Number:</b> 86822-1-PBS	<b>GenBank Accession Number:</b> BC156732	<b>Purification Method:</b> Protein A purification
<b>Size:</b> 100ug, Concentration: 1 mg/ml by Nanodrop;	<b>GeneID (NCBI):</b> 196441	<b>CloneNo.:</b> 251814F2
<b>Source:</b> Rabbit	<b>UNIPROT ID:</b> O60293	
<b>Isotype:</b> IgG	<b>Full Name:</b> zinc finger, C3H1-type containing	
<b>Immunogen Catalog Number:</b> AG34224	<b>Calculated MW:</b> 226 kDa	
	<b>Observed MW:</b> 260 kDa	

## Applications

**Tested Applications:**  
WB, Indirect ELISA

**Species Specificity:**  
human

## Background Information

ZFC3H1, also known as CCDC131 and PSRC2, is a large protein (1989 amino acids), with a C3H1- type zinc finger motif in its center, and contains five tetratricopeptide (TRP) repeats and six half-tetratricopeptide (HAT) repeats at the C-terminal region. It is involved in the processing of a variety of RNAs and plays a critical role in the degradation of nuclear RNAs (PMID: 34514952).

## Storage

**Storage:**  
Store at -80°C.  
**Storage Buffer:**  
PBS only, pH7.3

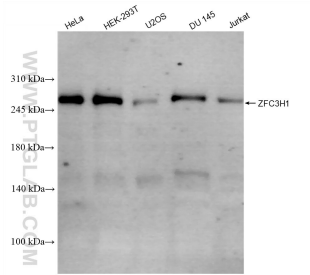
For technical support and original validation data for this product please contact:

T: 1 (888) 4PTGLAB (1-888-478-4522) (toll free in USA), or 1(312) 455-8498 (outside USA)

E: [proteintech@ptglab.com](mailto:proteintech@ptglab.com)  
W: [ptglab.com](http://ptglab.com)

**This product is exclusively available under Proteintech Group brand and is not available to purchase from any other manufacturer.**

## Selected Validation Data



Various lysates were subjected to SDS PAGE followed by western blot with 86822-1-RR (ZFC3H1 antibody) at dilution of 1:1000 incubated at room temperature for 1.5 hours. This data was developed using the same antibody clone with 86822-1-PBS in a different storage buffer formulation.