

For Research Use Only

ZFC3H1 Recombinant monoclonal antibody

Catalog Number: 86822-1-RR



Basic Information

Catalog Number: 86822-1-RR	GenBank Accession Number: BC156732	Purification Method: Protein A purification
Size: 100ul , Concentration: 1000 µg/ml by Nanodrop;	GeneID (NCBI): 196441	CloneNo.: 251814F2
Source: Rabbit	UNIPROT ID: O60293	Recommended Dilutions: WB: 1:500-1:2000
Isotype: IgG	Full Name: zinc finger, C3H1-type containing	
Immunogen Catalog Number: AG34224	Calculated MW: 226 kDa	
	Observed MW: 260 kDa	

Applications

Tested Applications: WB, ELISA	Positive Controls: WB : HeLa cells, HEK-293T cells, U2OS cells, DU 145 cells, Jurkat cells
Species Specificity: human	

Background Information

ZFC3H1, also known as CCDC131 and PSRC2, is a large protein (1989 amino acids), with a C3H1- type zinc finger motif in its center, and contains five tetratricopeptide (TRP) repeats and six half-tetratricopeptide (HAT) repeats at the C-terminal region. It is involved in the processing of a variety of RNAs and plays a critical role in the degradation of nuclear RNAs (PMID: 34514952).

Storage

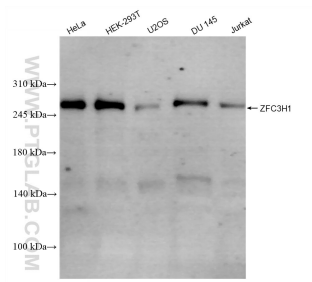
Storage:
Store at -20°C. Stable for one year after shipment.
Storage Buffer:
PBS with 0.02% sodium azide and 50% glycerol, pH7.3
Aliquoting is unnecessary for -20°C storage

*** 20ul sizes contain 0.1% BSA

For technical support and original validation data for this product please contact:
T: 1 (888) 4PTGLAB (1-888-478-4522) (toll free in USA), or 1(312) 455-8498 (outside USA)
E: proteintech@ptglab.com
W: ptglab.com

This product is exclusively available under Proteintech Group brand and is not available to purchase from any other manufacturer.

Selected Validation Data



Various lysates were subjected to SDS PAGE followed by western blot with 86822-1-RR (ZFC3H1 antibody) at dilution of 1:1000 incubated at room temperature for 1.5 hours.