

For Research Use Only

ZFC3H1 Recombinant monoclonal antibody, PBS Only (Capture)

Catalog Number: 86822-3-PBS



Basic Information

Catalog Number: 86822-3-PBS	GenBank Accession Number: BC156732	Purification Method: Protein A purification
Size: 100ug , Concentration: 1 mg/ml by Nanodrop;	GeneID (NCBI): 196441	CloneNo.: 251814B4
Source: Rabbit	UNIPROT ID: O60293	
Isotype: IgG	Full Name: zinc finger, C3H1-type containing	
Immunogen Catalog Number: AG34224	Calculated MW: 226 kDa	

Applications

Tested Applications:
Sandwich ELISA, Indirect ELISA

Species Specificity:
human

Product Information

86822-3-PBS targets ZFC3H1 as part of a matched antibody pair:

MP02807-1: 86822-3-PBS capture and 86822-2-PBS detection (validated in Sandwich ELISA)

Unconjugated rabbit recombinant monoclonal antibody in PBS only (BSA and azide free) storage buffer at a concentration of 1 mg/mL, ready for conjugation. Created using Proteintech's proprietary in-house recombinant technology. Recombinant production enables unrivalled batch-to-batch consistency, easy scale-up, and future security of supply.

This conjugation ready format makes antibodies ideal for use in many applications including: ELISAs, multiplex assays requiring matched pairs, mass cytometry, and multiplex imaging applications. Antibody use should be optimized by the end user for each application and assay.

Storage

Storage:
Store at -80°C.

Storage Buffer:
PBS only, pH7.3

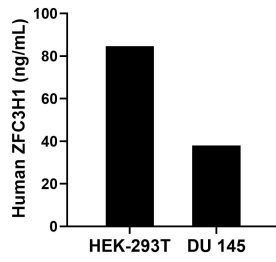
For technical support and original validation data for this product please contact:

T: 1 (888) 4PTGLAB (1-888-478-4522) (toll free in USA), or 1(312) 455-8498 (outside USA)

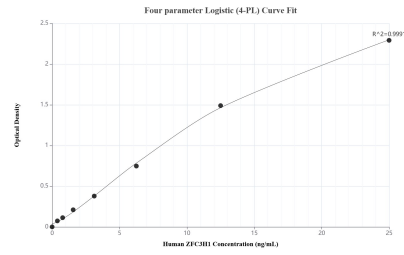
E: proteintech@ptglab.com
W: ptglab.com

This product is exclusively available under Proteintech Group brand and is not available to purchase from any other manufacturer.

Selected Validation Data



The mean ZFC3H1 concentration was determined to be 84.63 ng/mL in HEK-293T cell extract based on a 1.30 mg/mL extract load and 38.02 ng/mL in DU 145 cell extract based on a 5.40 mg/mL extract load.



Sandwich ELISA standard curve of MP02807-1, Human ZFC3H1 Recombinant Matched Antibody Pair - PBS only. 86822-3-PBS was coated to a plate as the capture antibody and incubated with serial dilutions of standard Ag34224. 86822-2-PBS was HRP conjugated as the detection antibody. Range: 0.391-25 ng/mL