

For Research Use Only

# PGRMC2 Recombinant monoclonal antibody

Catalog Number: 86835-1-RR



## Basic Information

<b>Catalog Number:</b> 86835-1-RR	<b>GenBank Accession Number:</b> BC016692	<b>Purification Method:</b> Protein A purification
<b>Size:</b> 100ul , Concentration: 1000 µg/ml by Nanodrop;	<b>GeneID (NCBI):</b> 10424	<b>CloneNo.:</b> 251819A8
<b>Source:</b> Rabbit	<b>UNIPROT ID:</b> O15173	<b>Recommended Dilutions:</b> WB: 1:2000-1:10000 IHC: 1:2500-1:10000 IF/ICC: 1:250-1:1000
<b>Isotype:</b> IgG	<b>Full Name:</b> progesterone receptor membrane component 2	
<b>Immunogen Catalog Number:</b> AG20077	<b>Calculated MW:</b> 223 aa, 24 kDa	
	<b>Observed MW:</b> 24 kDa, 28 kDa	

## Applications

**Tested Applications:**  
WB, IHC, IF/ICC, ELISA

**Species Specificity:**  
human, mouse

**Note-IHC: suggested antigen retrieval with TE buffer pH 9.0; (\*) Alternatively, antigen retrieval may be performed with citrate buffer pH 6.0**

**Positive Controls:**

**WB :** HeLa cells, ARPE-19 cells, HepG2 cells, MDA-MB-231 cells, NIH/3T3 cells, 3T3-L1 cells

**IHC :** human placenta tissue,

**IF/ICC :** HeLa cells,

## Background Information

Membrane-associated progesterone receptor component 2 (PGRMC2), also known as DG6 or PMBP, belongs to the cytochrome b5 family. This protein might play a role in cancer. The gene of PGRMC2 maps to chromosome 4q26, and encodes a 223-amino acid single-pass membrane protein with a cytochrome b5 heme-binding domain in its cytoplasmic domain. PGRMC2 has a calculated molecular weight of 24 kDa. The band of about 28 kDa detected by this antibody is unknown but may represent phosphorylated form of PGRMC2 (PMID: 28104494).

## Storage

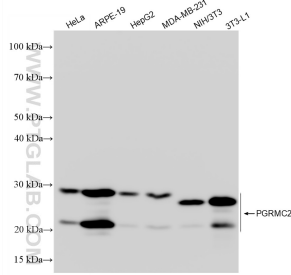
**Storage:**  
Store at -20°C. Stable for one year after shipment.  
**Storage Buffer:**  
PBS with 0.02% sodium azide and 50% glycerol, pH7.3  
**Aliquoting is unnecessary for -20°C storage**

**\*\*\* 20ul sizes contain 0.1% BSA**

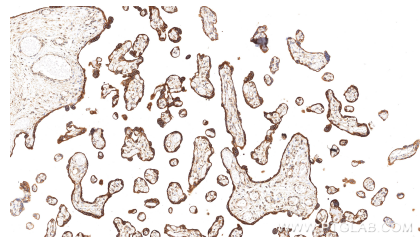
For technical support and original validation data for this product please contact:  
T: 1 (888) 4PTGLAB (1-888-478-4522) (toll free in USA), or 1(312) 455-8498 (outside USA)      E: proteintech@ptglab.com  
W: ptglab.com

**This product is exclusively available under Proteintech Group brand and is not available to purchase from any other manufacturer.**

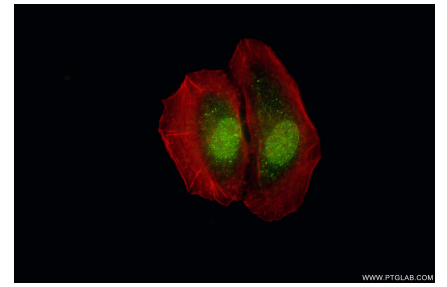
## Selected Validation Data



Various lysates were subjected to SDS PAGE followed by western blot with 86835-1-RR (PGRMC2 antibody) at dilution of 1:5000 incubated at room temperature for 1.5 hours.



Immunohistochemical analysis of paraffin-embedded human placenta tissue slide using 86835-1-RR (PGRMC2 antibody) at dilution of 1:5000 (under 10x lens). Heat mediated antigen retrieval with Tris-EDTA buffer (pH 9.0).



Immunofluorescent analysis of (4% PFA) fixed HeLa cells using PGRMC2 antibody (86835-1-RR, Clone: 251819A8) at dilution of 1:500 and CoraLite®488-Conjugated Goat Anti-Rabbit IgG(H+L) (SA00013-2), CL594-Phalloidin (red).